

PRODUCT INFORMATION PACKET



Model No: 056C17W15326
Catalog No: 056C17W15326
1/2,1725,TEFC,56C,1/60/115/208-230

Regal and LEESON are trademarks of Regal Rexnord Corporation or one of its affiliated companies.
©2025 Regal Rexnord Corporation, All Rights Reserved. MC017097E





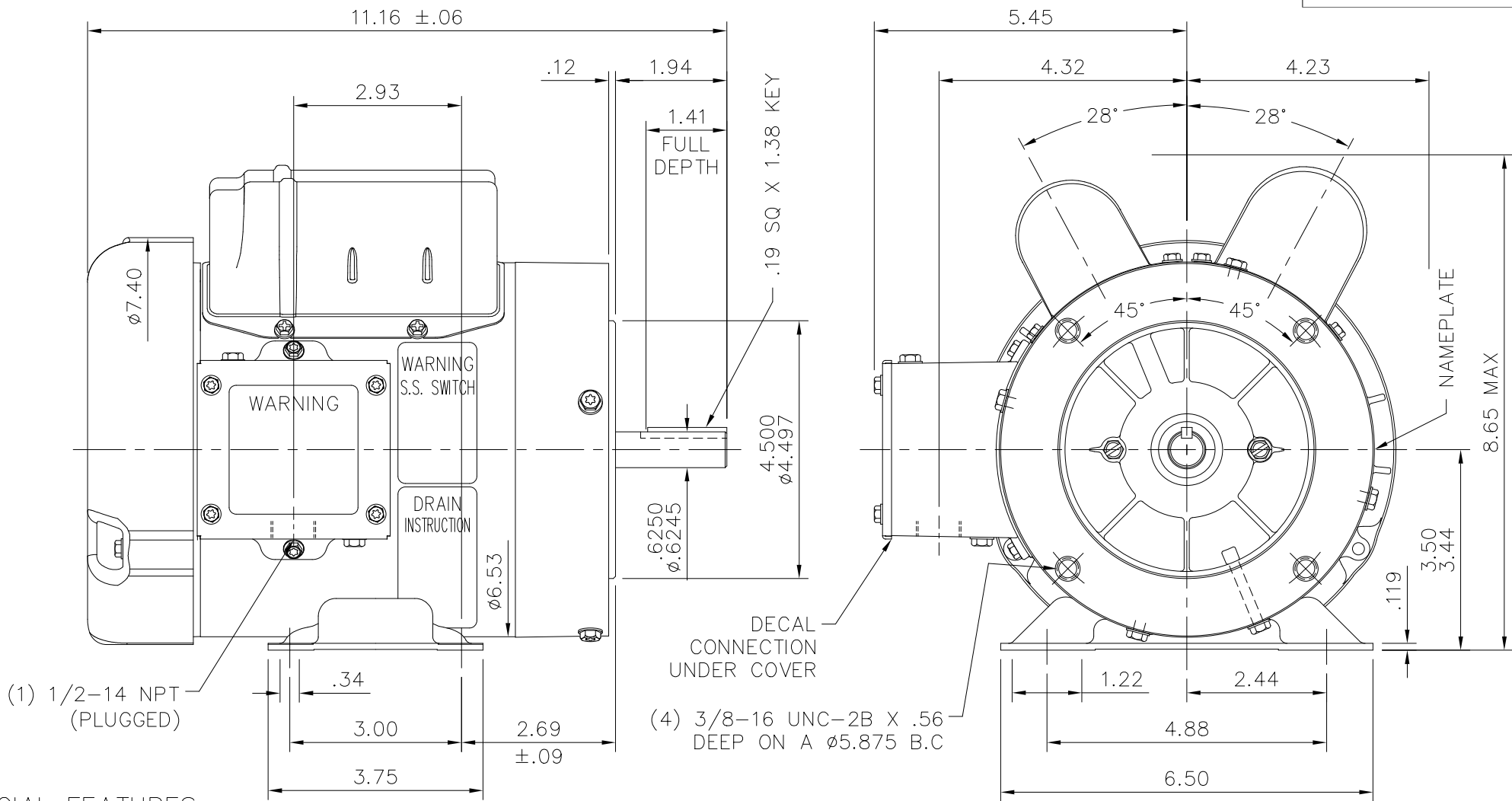
Nameplate Specifications

Phase	1	Output HP	0.50 Hp
Output KW	0.37 kW	Voltage	115/230 V
Speed	1725 rpm	Service Factor	1.15
Frame	56C	Enclosure	Totally Enclosed Fan Cooled
Thermal Protection	No Protection	Efficiency	66 %
Ambient Temperature	40 °C	Frequency	60 Hz
Current	8.8/4.4 A	Power Factor	58
Duty	Continuous	Insulation Class	F
Design Code	N	KVA Code	L
Drive End Bearing Size	6205	Opp Drive End Bearing Size	6203
UL	Recognized	CSA	Y
CE	N	IP Code	55
Number of Speeds	1		

Technical Specifications

Electrical Type	Capacitor Start Induction Run	Starting Method	Across The Line
Poles	4	Rotation	Selective Counterclockwise
Resistance Main	3.4 Ohms	Mounting	Rigid Base
Motor Orientation	Horizontal	Drive End Bearing	Ball
Opp Drive End Bearing	Ball	Frame Material	Rolled Steel
Shaft Type	NEMA 56	Assembly/Box Mounting	F1 ONLY
Connection Drawing	1TUP4WD	Outline Drawing	1TUP4OD


This is an uncontrolled document once printed or downloaded and is subject to change without notice. Date Created:08/13/2025



SPECIAL FEATURES:

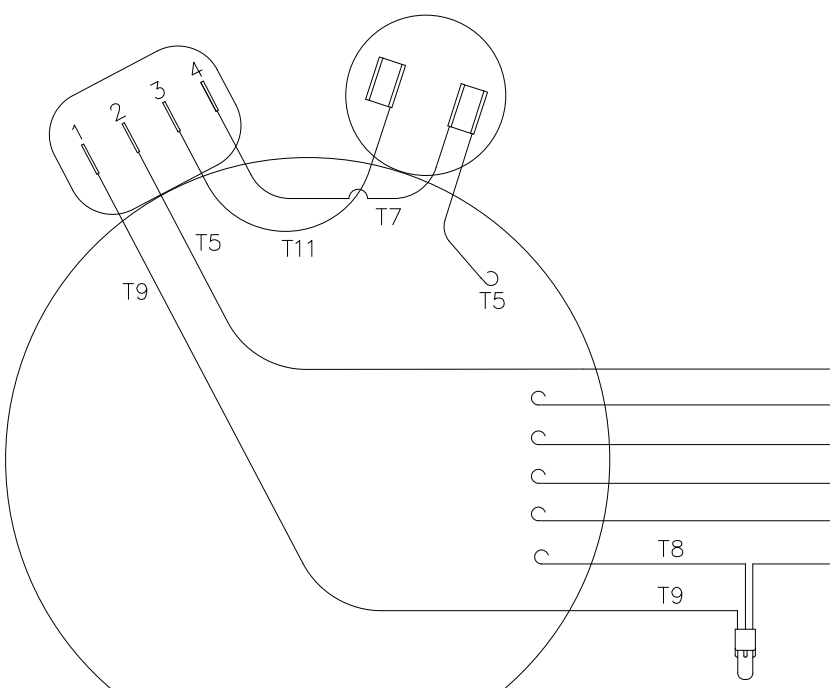
- 1) SHAFT SEALS & V-RING
- 2) PLUGGED DRAIN HOLES IN BOTH ENDBELLS & CONDUIT BOX
- 3) GASKETS THROUGHOUT
- 4) STAINLESS STEEL SHAFT, HARDWARE & NAMEPLATE

MAXIMUM FACE RUNOUT .004 T.I.R.
 MAXIMUM PILOT ECCENTRICITY .004 T.I.R.
 PERMISSIBLE SHAFT RUNOUT .002 T.I.R.

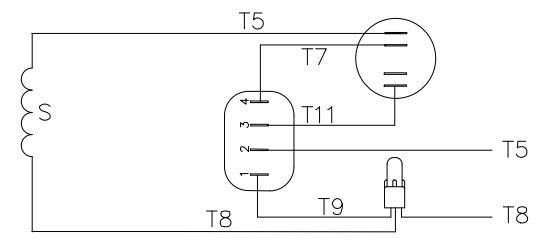
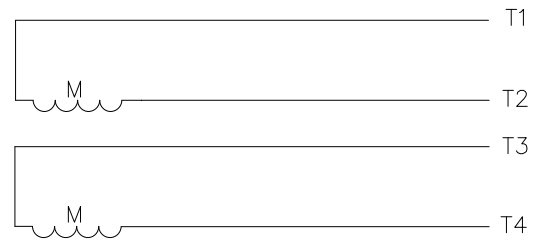
				TOLERANCES UNLESS SPECIFIED		 Regal Beloit America, Inc.	DRAWN RDW 5/30/07			
				DEC.	INCHES		CHK			
				.X	±.1		APPD KH 5/30/07			
03	UPDATED MARATHON TO RRX TEMPLATE (ECR-0244947)	KVDG08/07/25	DS	.XX	±.03	TITLE OUTLINE - 56C FRAME TEFC - RIGID "C"	SCALE 3=8			
02	RELOCATE CAP. CASES PER ISAAC 09-2299	LST 5/29/08		.XXX	±.005		REF 034964			
01	ADDED DRAIN HOLE SCREW PER ISAAC 08-1144	ARV 3/24/08		.XXXX	±.0005		FMF 56C17W15326			
NO.	REVISION	BY & DATE	CHK	ANG	±1/2"	FINISH	PREV			
THIS DRAWING IN DESIGN AND DETAIL IS OUR PROPERTY AND MUST NOT BE USED EXCEPT IN CONNECTION WITH OUR WORK ALL RIGHTS OF DESIGN AND INVENTION ARE RESERVED THIS IS AN ELECTRONICALLY GENERATED DOCUMENT - DO NOT SCALE THIS PRINT				RFP	5/30/07	CAD FILE	1TUP40D	SIZE	DRAWING NO.	REV.
				DIST		3 of 4		A	1TUP40D	03

4 3 2 1

VIEW FROM OUTSIDE OF MOTOR AT SWITCH END



LINE LEADS



T5
T1
T2
T3
T4
T8

	ROTATION FACING LEAD END	L1	L2	JOIN & INSULATE
HIGH VOLT	C.C.W.	T1	T4 T5	T2, T3 T8
	C.W.	T1	T4 T8	T2, T3 T5
LOW VOLT	C.C.W.	T1, T3 T8	T2, T4 T5	
	C.W.	T1, T3 T5	T2, T4 T8	

DRAWING REVISION C	REVISION BY KVDG	REV DATE / DATE 08/07/2025
REQUEST NUMBER ECR-0244973	APPROVED BY DS	DATE 08/07/2025

REQUEST NUMBER DESCRIPTION
 UPDATED THE DRAWING FROM MARATHON TO RRX TEMPLATE
COPYRIGHT (PER REVISION DATE) REGAL BELOIT AMERICA, INC. ALL RIGHTS RESERVED. PROPRIETARY AND CONFIDENTIAL INFORMATION - THIS DOCUMENT IS THE PROPERTY OF REGAL BELOIT AMERICA, INC. (OWNER) AND CONTAINS OWNER'S PROPRIETARY INFORMATION. ANY PERSON, CORPORATION OR OTHER FIRM RECEIVING IT IS DEEMED, BY RECEIVING IT, TO AGREE THAT IT, AND/OR ANY PART OF IT, SHALL NOT BE DISCLOSED TO ANY PERSON, CORPORATION OR OTHER ENTITY, DUPLICATED, AND/OR USED, EXCEPT AS EXPRESSLY APPROVED IN WRITING IN ADVANCE BY OWNER. THIS DOCUMENT SHALL BE RETURNED TO OWNER UPON REQUEST. IT MAY BE SUBJECT TO CERTAIN RESTRICTIONS UNDER APPLICABLE EXPORT CONTROL LAWS AND REGULATIONS.

TOLERANCES (EXCEPT AS NOTED):
 DEC. INCH mm ANGLE
 .X ±0.1 [±3] ±0.5°
 .XX ±0.01 [±0.03]
 .XXX ±0.005 [±0.13]
 .XXXX ±0.0005 [±0.013]
 REMOVE BURRS & BREAK SHARP
 EDGES: .003/.015 [.08/.38] X 45°
 CORNER FILLETS: R.02 [-.5]
 MACHINED SURFACES: 125 / 3.2 mm
 INCH mm
 mm DIMENSIONS IN [BRACKETS]
 ARE FOR REFERENCE ONLY

DRAWN BY
RDW
 DATE
06-01-07
 APPROVED BY
KH
 DATE
08-01-07
 REFERENCE
005278-01
 THIRD ANGLE PROJECTION

Regal Rexnord Regal Beloit America, Inc.

DESCRIPTION
EXTERNAL WIRING DIAGRAM
 TYPE "C" W/O PROTECTOR

MAT'L DECAL - 004012 PROCESS/FINISH 56C17W15326

SIZE B DRAWING NUMBER 1TUP4WD SHEET 1 OF 1

4 3 2 1