

Features

- Powered by the Kohler hybrid energy system
- Required for Memoirs® wall-mount touchless faucets
- 0.5 gpm (1.9 lpm) maximum flow rate
- On demand on and off. Maximum 30 second cycle time
- Ideal for use with KOHLER vessels
- Insight™ adaptive infrared technology
- Includes one 3.6V size C Hybrid energy cell
- Low-lead (SDWA) compliant

Material

- Brass

Installation

- Optional spout-mounting location
- Easy installation. Hybrid battery powered. It does not require AC connection



ADA

CSA B651

OBC

Codes/Standards

ASME A112.18.1/CSA B125.1

NSF/ANSI/CAN 372

ADA

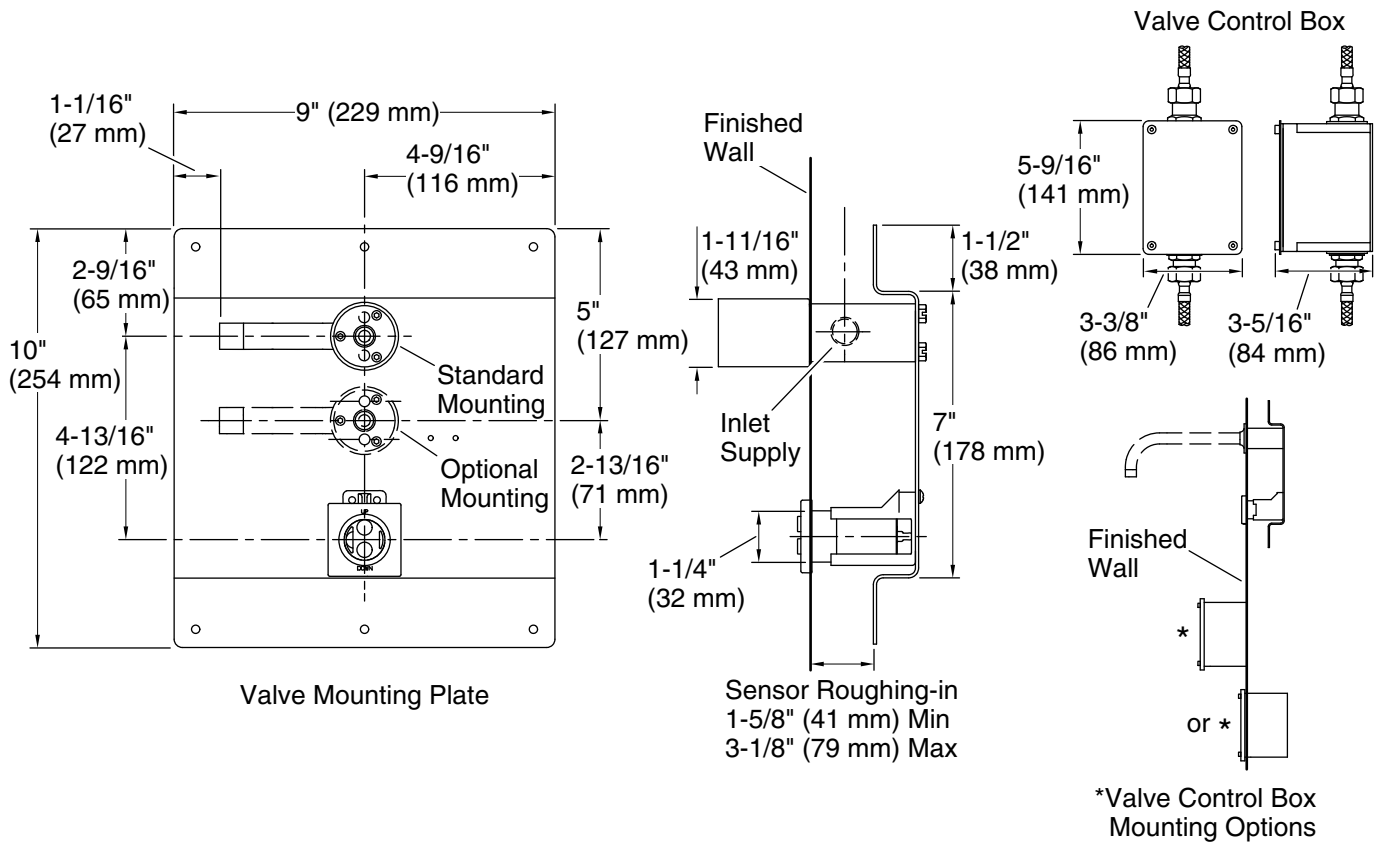
ICC/ANSI A117.1

CSA B651

OBC

KOHLER® One-Year Limited Warranty

See website for detailed warranty information.



Technical Information

All product dimensions are nominal.

Power source: Hybrid Energy Cell, included

Faucet flow rate: 0.5 gal/min (1.9 l/min)

Spout:

Notes

Install this product according to the installation instructions.

Reference the installation instructions for specific framing information.

For use with faucet trim K-T11838.

Valve control box can be installed in the wall or on the wall.

ADA, OBC, CSA B651 compliant when installed to the specific requirements of these regulations.