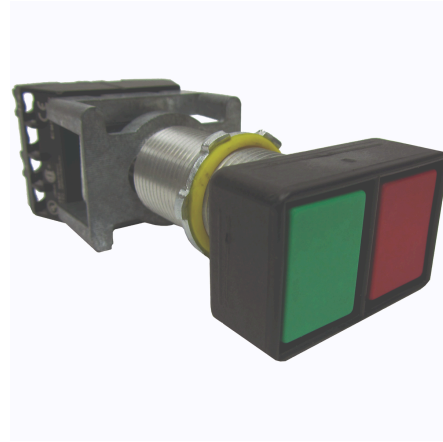




# G Series - Extended Momentary Contact Double Push Button Operator - Green And Red Buttons With "Start - Stop"/Blank Nameplate -1NO/1NC Contact Rating

By Killark  
Catalog # [GOL2GR12](#)



G Series - Aluminum Extended Momentary Contact Double Push Button Operator - Green And Red Buttons With "Start - Stop"/Blank Nameplate -1NO/1NC Contact Rating

### Features

- Operators are all aluminum except for certain movable parts which are stainless steel.
- All other parts such as screws are either stainless steel or plated steel.
- Threaded bodies are all 3/4"-14 NPSM thread.
- Control stations can be grouped into a single assembly thus reducing installation time and cost.

### Application

G Series custom control panel operators are designed for use in hazardous locations when installed in suitable enclosures such as B7E, EXB, XJB, DB, SWB, and GCS Series boxes and B7, Y7 starter enclosures.

### Specifications

Hazardous Rating(s)	<ul style="list-style-type: none"> <li>• Class I, Divisions 1 &amp; 2, Groups B, C, D</li> <li>• Class I, Zones 1 &amp; 2, Groups IIB, IIA</li> <li>• Class II, Divisions 1 &amp; 2, Groups E, F, G</li> <li>• Class III, Divisions 1 &amp; 2</li> </ul>
EU RoHS Indicator	Contact Manufacturer
Nema Rating	3, 4, 4X
UL File Number	E12379
CSA File Number	LR11714
Buy America(n) Qualified	Contact Manufacturer

### Conductor

Number Of Poles	2
-----------------	---

### Current

Contact Rating	<ul style="list-style-type: none"> <li>• 60A INRUSH @ 120 VAC</li> <li>• 30A INRUSH @ 240 VAC</li> <li>• 15A INRUSH @ 480 VAC</li> <li>• 12A INRUSH @ 600 VAC</li> </ul>
----------------	--

- 0.55A INRUSH @ 125 VDC
- 0.275A INRUSH @ 250 VDC
- 6A BREAKING @ 120 VAC
- 3A BREAKING @ 240 VAC
- 1.5A BREAKING @ 480 VAC
- 1.2A BREAKING @ 600 VAC
- 0.55A BREAKING @ 125 VDC
- 0.275A BREAKING @ 250 VDC
- 10A CARRYING @ 120 VAC
- 10A CARRYING @ 240 VAC
- 10A CARRYING @ 480 VAC
- 10A CARRYING @ 600 VAC
- 2.5A CARRYING @ 125 VDC
- 2.5A CARRYING @ 250 VDC.

Amperage Rating	10 A
Frequency Rating	50/60 Hz

### Dimensions

Gross Weight with Packaging	0.69
Width	2.25 in
Height	2 in
Length	6.75 in
Dimensions	6.75 in x 2.25 in x 2 in

### General

Type	Push Button
Series	GO Series
UPC	783936226101

### Operational

Action	Momentary
Actuator	Double Pushbutton

### Product Assets

[Catalog \[English\]](#)

