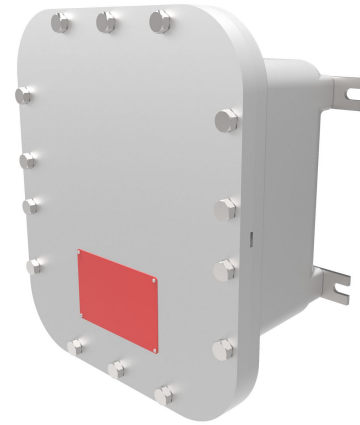




# EXBLT explosionproof and flameproof bolted enclosure, 14 X 14 X 8, Class I, II, III, BCDEFG, Cast Aluminum box, Aluminum plate cover, Type 4

By Killark  
Catalog # [EXBLTP-14148 N4](#)

EXBLTP Series, 14 X 14 X 8, Class I, II, III, BCDEFG, Cast Aluminum box, Aluminum plate cover, Type 4, Bolted Enclosure



## Features

- High strength, lighter weight, corrosion resistant copper free cast aluminum construction.
- Reduced number of cover bolts.
- Cover “O”-ring, Nitrile (BUNA-N) material, supplied standard for a Type 4 rating.
- Mounting lugs are bi-directional, bolt on, made from ductile aluminum alloy.
- Back pan mounting holes predrilled.
- Conduit and device openings factory or field installed.
- Aluminum hinges and stainless steel hardware standard on mid to large size boxes.
- Recessed flange notches to allow for easier cover opening.

## Specifications

|                     |   |
|---------------------|---|
| Hazardous Rating(s) | <ul style="list-style-type: none"> <li>• Class I, Divisions 1 &amp; 2, Groups B, C, D</li> <li>• Class I, Zones 1 &amp; 2, Groups IIB+H2, IIA</li> <li>• Class II, Divisions 1 &amp; 2, Groups E, F, G</li> <li>• Class III, Divisions 1 &amp; 2</li> </ul> |
| EU RoHS Indicator   | Contact Manufacturer  |

|                          |                          |
|--------------------------|--------------------------|
| Nema Rating              | 3, 4, 4X                 |
| UL File Number           | E10514 / E83696 / E12379 |
| CSA File Number          | LR11716                  |
| Buy America(n) Qualified | Contact Manufacturer     |

## Dimensions

|        |                |
|--------|----------------|
| Size   | 14" x 14" x 8" |
| Weight | 46 lb.         |

## General

|            |  |
|------------|--|
| Type       | Junction Box                                 |
| Series     | EXBLT Seires                                 |
| Cover Type | Bolted                                       |
| Material   | Aluminum, Copper Free (less than 4/10 of 1%) |
| UPC        | 783936175423                                 |
| Color      | Gray   |

## Product Assets

- [Catalog \[English\]](#)
- [Catalog Page \[English\]](#)
- [Installation Manual \[English\]](#)
- [Installation Manual \[English\]](#)