



## EXBLT explosionproof and flameproof bolted enclosure, 12 X 12 X 6, Class I, II, III, BCDEFG, Cast Aluminum box, Aluminum plate cover, Type 4

By Killark

Catalog # [EXBLTP-12126 N4](#)

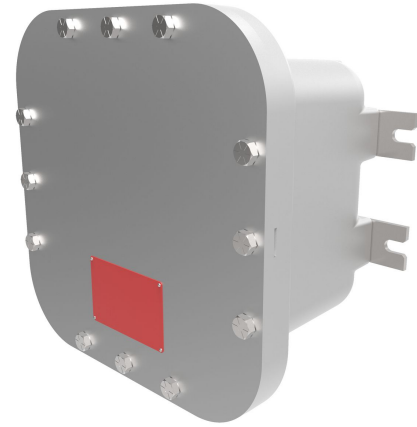
EXBLTP Series, 12 X 12 X 6, Class I, II, III, BCDEFG, Cast Aluminum box, Aluminum plate cover, Type 4, Bolted Enclosure

### Features

- High strength, lighter weight, corrosion resistant copper free cast aluminum construction.
- Reduced number of cover bolts.
- Cover "O"-ring, Nitrile (BUNA-N) material, supplied standard supplied standard for a Type 4 rating.
- Mounting lugs are bi-directional, bolt on, made from ductile aluminum alloy.
- Back pan mounting holes predrilled.
- Conduit and device openings factory or field installed.
- Aluminum hinges and stainless steel hardware standard on mid to large size boxes.
- Recessed flange notches to allow for easier cover opening.

### Specifications

Hazardous Rating(s)	<ul style="list-style-type: none"><li>• Class I, Divisions 1 &amp; 2, Groups B, C, D</li><li>• Class I, Zones 1 &amp; 2, Groups IIB+H2, IIA</li><li>• Class II, Divisions 1 &amp; 2, Groups E, F, G</li><li>• Class III, Divisions 1 &amp; 2</li></ul>
---------------------	--------------------------------------------------------------------------------------------------------------------------------------------------------------------------------------------------------------------------------------------------------



EU RoHS Indicator  
Nema Rating  
UL File Number  
CSA File Number

Contact Manufacturer  
3, 4, 4X  
E10514 / E83696 / E12379  
LR11716

### Dimensions

Size 12" x 12" x 6"

### General

Type	Junction Box
Series	EXBLT Seires
Cover Type	Bolted
Material	Aluminum, Copper Free (less than 4/10 of 1%)
UPC	783936157979
Color	Gray

### Product Assets

[Catalog \[English\]](#)  
[Catalog Page \[English\]](#)  
[Installation Manual \[English\]](#)  
[Installation Manual \[English\]](#)