



# EXBLT explosionproof and flameproof bolted enclosure, 10 X 10 X 8, Class I, II, III, BCDEFG, Cast Aluminum box, Aluminum plate cover, Type 4

By Killark  
Catalog # [EXBLTP-10108 N4](#)

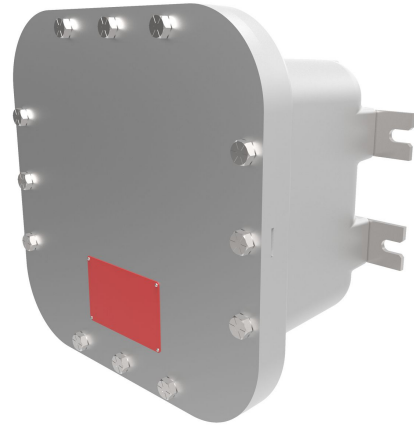
EXBLTP Series, 10 X 10 X 8, Class I, II, III, BCDEFG, Cast Aluminum box, Aluminum plate cover, Type 4, Bolted Enclosure

### Features

- High strength, lighter weight, corrosion resistant copper free cast aluminum construction.
- Reduced number of cover bolts.
- Cover “O”-ring, Nitrile (BUNA-N) material, supplied standard for a Type 4 rating.
- Mounting lugs are bi-directional, bolt on, made from ductile aluminum alloy.
- Back pan mounting holes predrilled.
- Conduit and device openings factory or field installed.
- Aluminum hinges and stainless steel hardware standard on mid to large size boxes.
- Recessed flange notches to allow for easier cover opening.

### Specifications

Hazardous Rating(s)	<ul style="list-style-type: none"> <li>• Class I, Divisions 1 &amp; 2, Groups B, C, D</li> <li>• Class I, Zones 1 &amp; 2, Groups IIB+H2, IIA</li> <li>• Class II, Divisions 1 &amp; 2, Groups E, F, G</li> <li>• Class III, Divisions 1 &amp; 2</li> </ul>
EU RoHS Indicator	Contact Manufacturer



Nema Rating	3, 4, 4X
UL File Number	E10514 / E83696 / E12379
CSA File Number	LR11716
Buy America(n) Qualified	Contact Manufacturer

### Dimensions

Size	10" x 10" x 8"
------	----------------

### General

Type	Junction Box
Series	EXBLT Seires
Cover Type	Bolted
Material	Aluminum, Copper Free (less than 4/10 of 1%)
UPC	783936157948
Color	Gray

### Product Assets

- [Catalog \[English\]](#)
- [Catalog Page \[English\]](#)
- [Installation Manual \[English\]](#)
- [Installation Manual \[English\]](#)