



EXBLT explosionproof and flameproof bolted enclosure, 10 X 10 X 6, Class I, II, III, BCDEFG, Cast Aluminum box, Aluminum plate cover, Type 4

By Killark
Catalog # [EXBLTP-10106 N4](#)

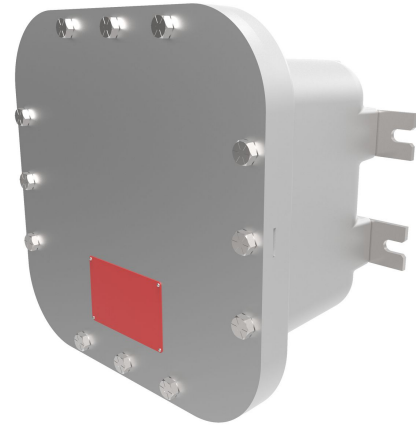
EXBLTP Series, 10 X 10 X 6, Class I, II, III, BCDEFG, Cast Aluminum box, Aluminum plate cover, Type 4, Bolted Enclosure

Features

- High strength, lighter weight, corrosion resistant copper free cast aluminum construction.
- Reduced number of cover bolts.
- Cover “O”-ring, Nitrile (BUNA-N) material, supplied standard for a Type 4 rating.
- Mounting lugs are bi-directional, bolt on, made from ductile aluminum alloy.
- Back pan mounting holes predrilled.
- Conduit and device openings factory or field installed.
- Aluminum hinges and stainless steel hardware standard on mid to large size boxes.
- Recessed flange notches to allow for easier cover opening.

Specifications

Hazardous Rating(s)	<ul style="list-style-type: none"> • Class I, Divisions 1 & 2, Groups B, C, D • Class I, Zones 1 & 2, Groups IIB+H2, IIA • Class II, Divisions 1 & 2, Groups E, F, G • Class III, Divisions 1 & 2
EU RoHS Indicator	Contact Manufacturer



Nema Rating	3, 4, 4X
UL File Number	E10514 / E83696 / E12379
CSA File Number	LR11716
Buy America(n) Qualified	Contact Manufacturer

Dimensions

Size	10" x 10" x 6"
------	----------------

General

Type	Junction Box
Series	EXBLT Seires
Cover Type	Bolted
Material	Aluminum, Copper Free (less than 4/10 of 1%)
UPC	783936157931
Color	Gray

Product Assets

- [Catalog \[English\]](#)
- [Catalog Page \[English\]](#)
- [Installation Manual \[English\]](#)
- [Installation Manual \[English\]](#)