



EXB explosionproof and flameproof bolted enclosure, 24 X 30 X 8, Class I, II, III, BCDEFG, Cast Aluminum, Type 4,

By Killark
Catalog # [EXB-24308 N34](#)

EXB Series, 24 X 30 X 8, Class I, II, III, BCDEFG, Cast Aluminum, Type 4, Bolted Enclosure

Features

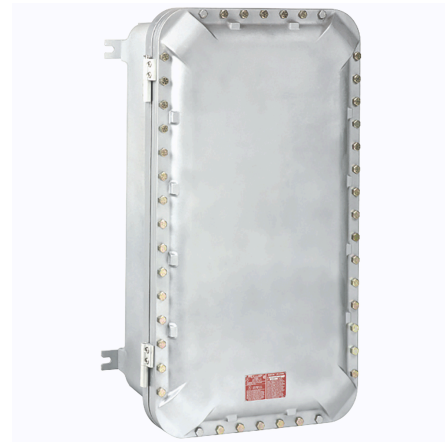
- High strength, lighter weight, corrosion resistant copper free cast aluminum construction.
- Reduced number of cover bolts.
- Cover o-ring, Nitrile (BUNA-N) material, supplied standard supplied standard for a Type 4X rating.
- Mounting lugs are bi-directional, bolt on, made from ductile aluminum alloy.
- Back pan mounting holes predrilled.
- Conduit and device openings factory or field installed.
- Aluminum hinges and stainless steel hardware standard on mid to large size boxes.
- Recessed flange notches to allow for easier cover opening.

Application

Locations made hazardous due to the presence of flammable gases or vapors, combustible dust, or easily ignitable fibers and flyings, and areas which are subject to corrosion, weather, and dampness. Petroleum refineries, chemical and petrochemical plants w

Specifications

IECEX File Number	IEC E x 07.0022U / IEC E x 07.0023
EU RoHS Indicator	Contact Manufacturer
CSA File Number	LR11716
ATEX File Number	PTB 07 ATEX 1025U / PTB 07 ATEX 1024
Hazardous Rating(s)	<ul style="list-style-type: none"> • Class I, Divisions 1 & 2, Groups B, C, D



- Class I, Zones 1 & 2, Groups IIB+H2, IIA
 - Class II, Divisions 1 & 2, Groups E, F, G
 - Class III, Divisions 1 & 2 3, 4, 4X
- E10514 / E83696 / E12379
Contact Manufacturer

Nema Rating
UL File Number
Buy America(n) Qualified

Dimensions

Length	12.4 in
Size	24" x 30" x 8"
Gross Weight with Packaging	430
Width	29.25 in
Height	35.25 in
Dimensions	12.4 in x 29.25 in x 35.25 in

General

Series	EXB Series
Color	Gray
Type	Junction Box
Cover Type	Bolted
Material	Aluminum, Copper Free (less than 4/10 of 1%)
UPC	783936119366

Product Assets

- [Catalog \[English\]](#)
- [Catalog Page \[English\]](#)
- [Installation Manual \[English\]](#)
- [Installation Manual \[English\]](#)