



EXB explosionproof and flameproof bolted enclosure, 24 X 24 X 8, Class I, II, III, BCDEFG, Cast Aluminum, Type 4

By Killark
Catalog # [EXB-24248 N34](#)

EXB Series, 24 X 24 X 8, Class I, II, III, BCDEFG, Cast Aluminum, Type 4, Bolted Enclosure

Features

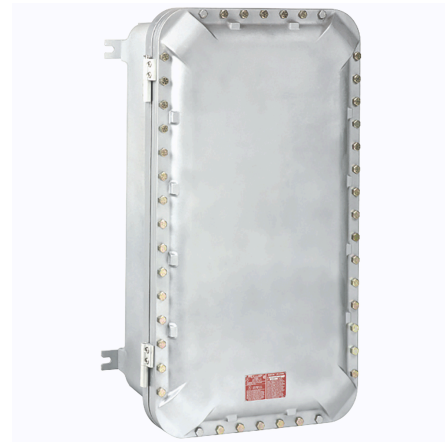
- High strength, lighter weight, corrosion resistant copper free cast aluminum construction.
- Reduced number of cover bolts.
- Cover o-ring, Nitrile (BUNA-N) material, supplied standard
- Mounting lugs are bi-directional, bolt on, made from ductile aluminum alloy.
- Back pan mounting holes predrilled.
- Conduit and device openings factory or field installed.
- Aluminum hinges and stainless steel hardware standard on mid to large size boxes.
- Recessed flange notches to allow for easier cover opening.

Application

Locations made hazardous due to the presence of flammable gases or vapors, combustible dust, or easily ignitable fibers and flyings, and areas which are subject to corrosion, weather, and dampness. Petroleum refineries, chemical and petrochemical plants w

Specifications

Hazardous Rating(s)	<ul style="list-style-type: none">• Class I, Divisions 1 & 2, Groups B, C, D• Class I, Zones 1 & 2, Groups IIB+H2, IIA• Class II, Divisions 1 & 2, Groups E, F, G• Class III, Divisions 1 & 2
IECEX File Number	IEC E x 07.0022U / IEC E x 07.0023



EU RoHS Indicator
Nema Rating
UL File Number
CSA File Number
Buy America(n) Qualified
ATEX File Number

Contact Manufacturer
3, 4, 4X
E10514 / E83696 / E12379
LR11716
Contact Manufacturer
PTB 07 ATEX 1025U / PTB 07 ATEX 1024

Dimensions

Size	24" x 24" x 8"
Gross Weight with Packaging	330
Width	28.38 in
Height	28.38 in
Length	12.19 in
Dimensions	12.19 in x 28.38 in x 28.38 in

General

Type	Junction Box
Series	EXB Series
Cover Type	Bolted
Material	Aluminum, Copper Free (less than 4/10 of 1%)
UPC	783936119250
Color	Gray

Product Assets

- [Catalog \[English\]](#)
- [Catalog Page \[English\]](#)
- [Installation Manual \[English\]](#)
- [Installation Manual \[English\]](#)