



Mounting Pan, 6061 Aluminum, for use in EXB-2424 Bolted Enclosure

By Killark
Catalog # 8000-1

Mounting Pan, 6061 Aluminum, for use in EXB-2424 Bolted Enclosure

Features

- Mounting pans are 1/8" or 3/16" thick sheet aluminum and are sized to provide the maximum usable surface area when installed.
- Made of high strength, light weight, corrosion resistant 6061-T6 aluminum sheet stock.

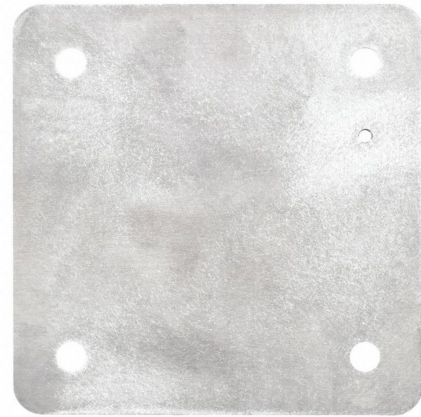
Application

For use with EXB and EXBLT Series enclosures.

Specifications

EU RoHS Indicator	Contact Manufacturer
Buy America(n) Qualified	Contact Manufacturer

Dimensions



Gross Weight with Packaging	8
Width	22.25 in
Height	0.125 in
Length	22.25 in
Dimensions	22.25 in x 22.25 in x 0.125 in

General

Type	Mounting Pan
Series	EXB Series
Material	Aluminum, Copper Free (less than 4/10 of 1%)
UPC	783936982861
Color	Gray

Product Assets

[Catalog \[English\]](#)