



**KERN & Sohn GmbH**

Ziegelei 1  
D-72336 Balingen  
E-Mail: [info@kern-sohn.com](mailto:info@kern-sohn.com)

Phone: +49-[0]7433- 9933-0  
Fax: +49-[0]7433-9933-149  
Internet: [www.kern-sohn.com](http://www.kern-sohn.com)

# Operating manual

## Mechanical height measuring rod

**KERN**

TMBA-A01-A  
Version 1.2  
2020-10  
GB

**MBA-A01**



MBA-A01-BA-e-2012



# KERN MBA-A01

Version 1.2 2020-10

## Operating manual Mechanical height measuring rod

### Table of contents

1	Technical data.....	2
2	Declaration of conformity .....	3
3	Appliance overview .....	4
4	Explanation of the graphic symbols .....	5
5	Basic Information (General).....	6
6	Basic Safety Precautions .....	7
7	Unpacking/installing.....	8
8	Body height measurement.....	10
9	Cleaning, Maintenance, Disposal .....	12

## 1 Technical data

KERN (type)	TMBA-A01-A
Model	MBA-A01
Measuring range	30 – 80 cm
Readability	1 mm
Tolerance	5 mm
Dimensions (D x H x W) mm	850 x 240 x 60 mm
Temperature range	+10°C ... +40°C
Net weight	approx. 360 g
Admitted as medical product as per Guideline 93/42/EWG (CE 0297)	Category I with measuring function



The height meter is only suitable for use with baby weighing scale KERN MBA-M.

---

## 2 Declaration of conformity

---

The current EC/EU Conformity declaration can be found online in:

[www.kern-sohn.com/ce](http://www.kern-sohn.com/ce)

---

### 3 Appliance overview

---



1. Measuring rod
2. Head stop
3. Caliper gauge/Heel stop

---

## 4 Explanation of the graphic symbols

---

**SN WD 20xxx**

Designation of the serial number of every device, applied at the device and on the packaging.

Number here as example



**2020-10**

Identification of the manufacturing date of the medical product.

Year and month here as example



„Attention observe accompanying document“, or  
„Follow operating instructions“



„Follow operating instructions“



„Follow operating instructions“



**Kern & Sohn GmbH  
D – 72336 Balingen  
Ziegelei 1**

Manufacturer's marking of  
medical product including address

10°C / 40°C


Temperature limitation in the application  
indicating the lower and the upper limit  
(Allowable ambient temperature)

Temperature indication as example

---

## 5 Basic Information (General)

---

	This height measuring rod according to guideline 93/42/EWG is provided for determination the body height in medical practice and for medical survey, examination and treatment.
---	---

**Defined purpose**

**Indication:**

- Determining the body height in the medical practice area.
- For a baby resting on his/her back, attach the measuring rod in such a way on head and feet that you can read the body height on the scale.

**Contraindication:**

No contraindication known.

**Proper use**

This height measuring rod is designed for measuring the height of a baby resting on his/her back, in medical treatment rooms. This height measuring rod is suitable to detect, prevent and survey diseases.

Ensure that the height measuring rod may only come into contact only with uninjured skin.

**Improper Use**

The structure of the height measuring rod may not be modified. This may result in incorrect measuring results, safety-related defects as well as destruction.

The height measuring rod may only be used according to the described conditions. Other areas of use must be released by KERN in writing.

**Warranty**

Warranty claims shall be voided in case

- Our conditions in the operation manual are ignored
- The appliance is used outside the described uses
- The appliance is modified or opened
- Mechanical damage or damage by media, liquids, natural wear and tear.
- Non correct implantation or assembly.



**Test device control**

For height measuring rods, we recommend a metrological examination of the accuracy of the measuring rod, however, this is not mandatory as the determination of human body height involves rather large, intrinsic inaccuracies.

---

## 6 Basic Safety Precautions

---

	⇒ Carefully read this operation manual before setup and commissioning, even if you are already familiar with KERN balances.	
---	---	---

### Staff training

The medical staff must apply and follow the operating instructions for proper use and care of the product.

### Avoiding contamination

In order to avoid crossed contamination (fungal disease,...) the parts coming into contact with the patient must be cleared regularly.

Recommendation:

After every application which could have a potential contamination as consequence (e.g. direct contact with the skin).

### Safety Instructions

- Observe operating instructions.
- Please use no other than the supplied fixtures for mounting.
- Ensure during installation that the height measuring rod has been assembled correctly.
- When shifting the measuring rod, ensure that the baby does not come to any harm.
- Reliable values of body height measurements are only achieved if the heel, back and head are aligned in a straight line.
- Do not attach the height measuring rod to any other but the baby weighing scale KERN MBA-M.
- During installation make sure that the screws are fitted firmly.
- Do not leave a baby unattended.
- When shifting the measuring rod make sure that neither the hands nor the feet of the baby are resting on the measuring rod.
- Clean and disinfect the measuring rod at regular intervals.
- To achieve correct height measuring, we recommend that you involve a second person.

---

## 7 Unpacking/installing

---

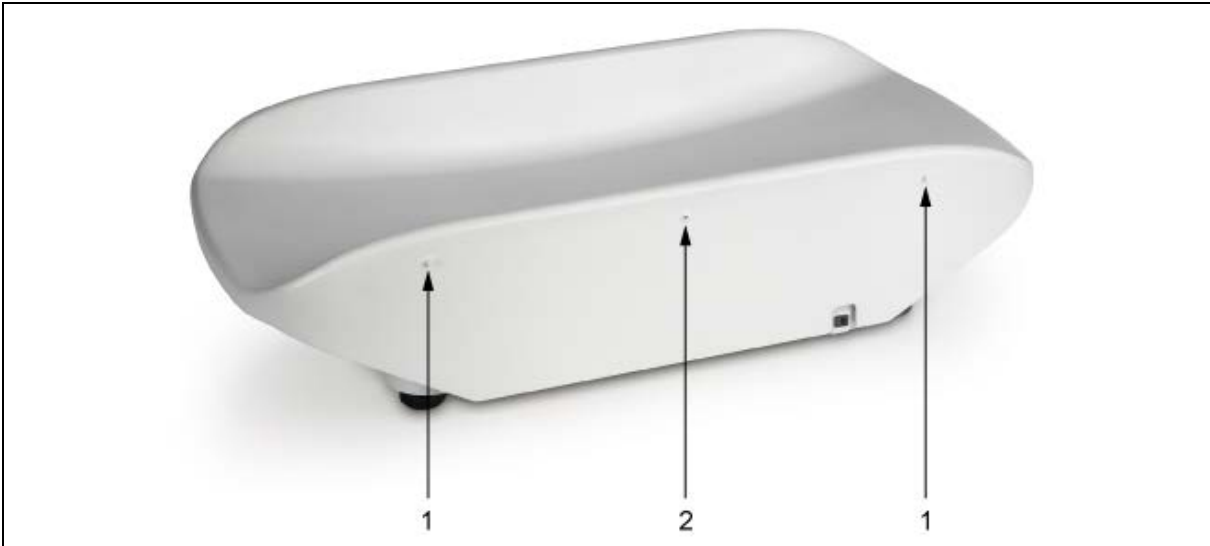
**Testing upon acceptance** Please check packaging as well as the height meter on receipt for possibly visible external damages.

**Packaging/Return** Keep all parts of the original packaging for a possibly required return. Only use original packaging for returning.

**Scope of delivery**

- Height measuring rod
- 1 Fixing screw
- Operation manual

**Installing:**



Place the length meter on the edge of the housing.  
The length meter should be clipped on the 2 pins (1) on the left and right side.



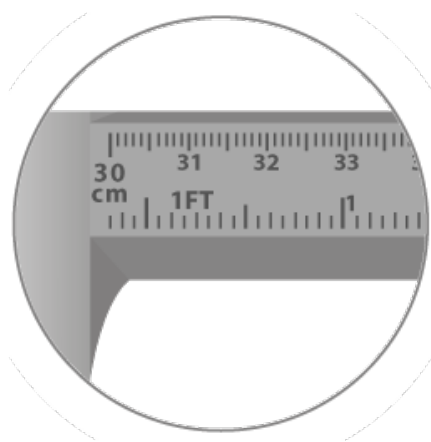
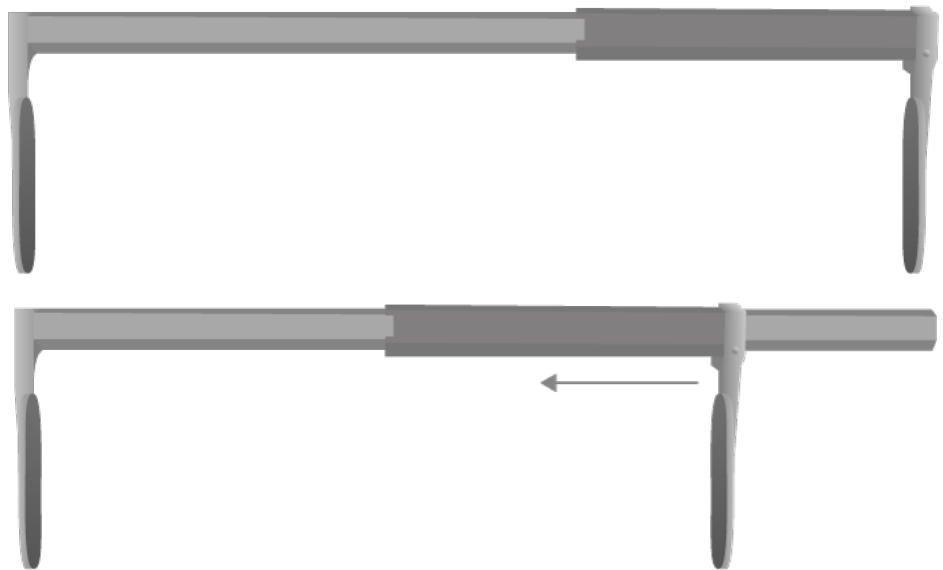
Fix it with the delivered screw on the center hole (2).  
To access the screw hole on the length meter, it must be fully extended.



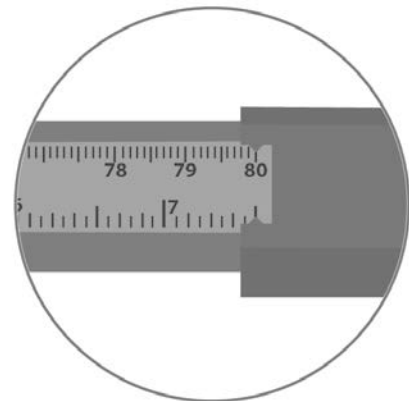
---

## 8 Body height measurement

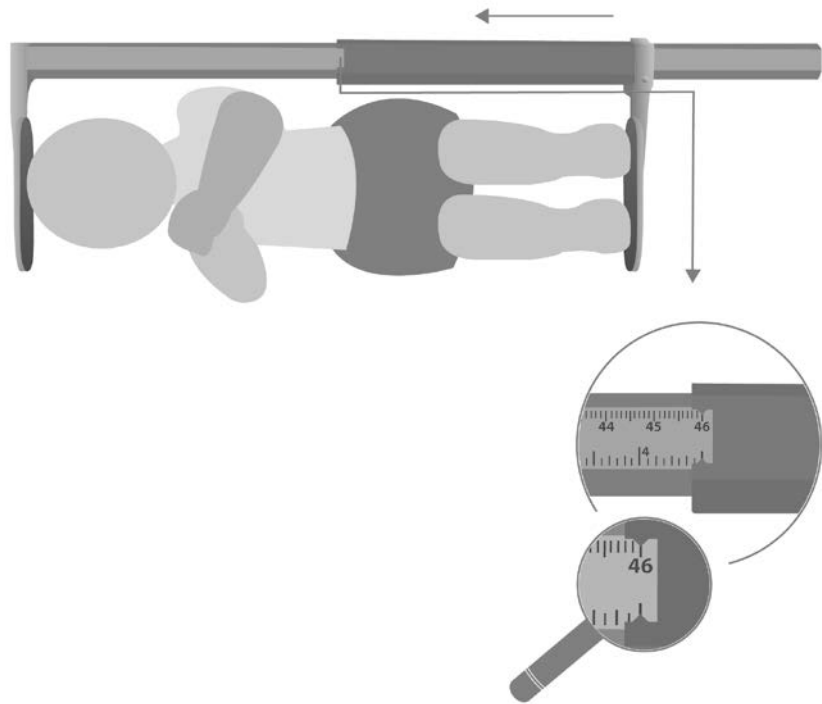
---




**Fixed stop**  
min. 30 cm



**Movable stop**  
max. 80 cm



- ⇒ Position the baby in a way that the head touches gently the fixed stop.
- ⇒ Shift caliper gauge acc. to fig. till the heel stop.
- ⇒ Read the body height.

	<ul style="list-style-type: none"> <li>⇒ Do not leave a baby unattended.</li> <li>⇒ When shifting the measuring rod, make sure that no harm is done to the baby and that its hands and feet do not rest on the measuring rod.</li> <li>⇒ Press the baby's knees gently onto the weighing pan.</li> </ul>
---	--

---

## 9 Cleaning, Maintenance, Disposal

---

**Cleaning  
Disinfection**

Clean the height measuring rod with household detergent or commercially available disinfectant, e.g. 70% isopropanol. We recommend a disinfectant suitable for wiping disinfection. Please follow manufacturer's instructions.

Do not use abrasive or aggressive cleaners such as spirits or alcohol or similar as they might damage the high-quality surface.

**Sterilisation**

Sterilisation of the appliance not allowed.

**Disposal**

Disposal of packaging and height meter must be carried out by operator according to valid national or regional law of the location where the appliance is used.



Do not spray the height measuring rod with disinfectant.  
Remove dirt immediately