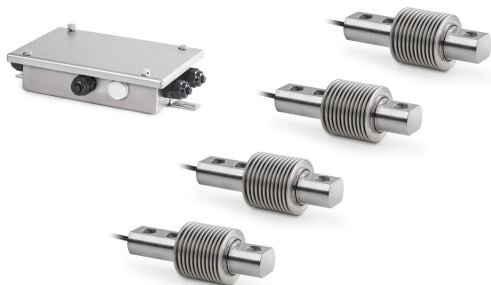


KERN CW 600R



Balance kit for individual assembly of floor scales - suitable for use in harsh industrial environments with humid environmental conditions



Category

| | |
|------------------|-----------------|
| Brand | Sauter |
| Product category | Measuring cells |

Measuring System

| | |
|-------------------------|--------------|
| Weighing capacity [Max] | 600 kg |
| Weighing system | Strain gauge |

Approval

| | |
|-----------------|-----|
| Accuracy classe | III |
|-----------------|-----|

Display

| | |
|--------------|---------------|
| Display type | not available |
|--------------|---------------|

Construction

| | |
|--------------------------|----------------------|
| Material display housing | No display available |
| Material load cell(s) | stainless steel |
| Load cells - number | 4 |

Functions

| | |
|---------------------------|------|
| IP protection - load cell | IP68 |
|---------------------------|------|

Packing & Shipping

| | |
|------------------------------|----------------|
| Readability force [d] (N) | 1 d |
| Shipping method | Parcel service |
| Dimensions packaging (W×D×H) | 520×430×340 mm |
| Net weight approx. | 2,6 kg |
| Gross weight approx. | 3,0 kg |

Piktogramme

STANDARD

