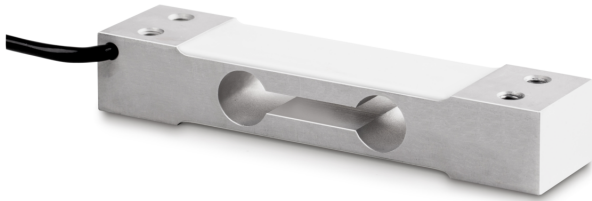


SAUTER CP 50-2-3P1

KERN

Single-point load cell made of anodised aluminium with extra-long cable



Category

Brand	Sauter
Product category	Measuring cell
Product group	Load cell
Product family	CP P1

Measuring System

Weighing capacity [Max]	50 kg
Load cell - characteristic value - nominal	2 mV/V
Load cell - characteristic value - variance	0,2 mV/V
Load cell OIML class	C3
Load cell connection	4-wire
Power supply + Colour	red
Power supply - Colour	black
Signal + Colour	green
Signal - Colour	white
Load cell - Resolution (verifiable)	3000 e
Load cell - Dead load [Min] (%)	0%
Measuring applications	mass
Directions of force	compression
Load cell - Y-value	10000
Load cell - Input resistance - nominal	409 Ω
Load cell - Input resistance - variance	6 Ω
Load cell - Output resistance - nominal	350 Ω
Load cell - Output resistance - variance	3 Ω
Load cell - Recommended excitation voltage [Min]	5 V
Load cell - Recommended excitation voltage [Max]	12 V
Load cell - Isolation resistance - [Min]	5000 MΩ

Load cell - Combined error	0,023%
Temperature coefficient - characteristic value	≤± 0.0175%FS/10 °C
Zero balance	≤± 2.0%FS
Temperature coefficient - zero signal	≤± 0.02%FS/10 °C
Creep error (30 minutes)	≤± 0.0167%FS
Safe overload	150%
Ultimate overload	300%

Functions

IP protection - complete device	IP65
---------------------------------	------

Construction

Material	aluminium
Design	Singlepoint load cell
Dimension (W×D×H)	130×30×22 mm
Maximum platform size	250×350 mm
Cable length	2 m
Mounting - force application	2 × threaded hole M6
Mounting - force dissipation	2 × threaded hole M6

Environmental conditions

Ambient temperature [Min]	-35 °C
Ambient temperature [Max]	65 °C
Use temperature [Min]	-10 °C
Use temperature [Max]	40 °C
Storage temperature [Min]	-40 °C
Storage temperature [Max]	70 °C

Approval

CE mark	✓
---------	---

Product information

GTIN/EAN number	4045761363229
Trade number	84239010
REACH classification	no prohibited substances

Packing & Shipping

Shipping method	Parcel service
Delivery time	1 d
Dimensions packaging (W×D×H)	165×100×45 mm
Net weight approx.	0,25 kg
Gross weight approx.	0,30 kg
Shipping weight	0,27 kg

SAUTER CP 50-2-3P1

Single-point load cell made of anodised aluminium with extra-long cable

KERN

Pictograms

STANDARD



OPTION

