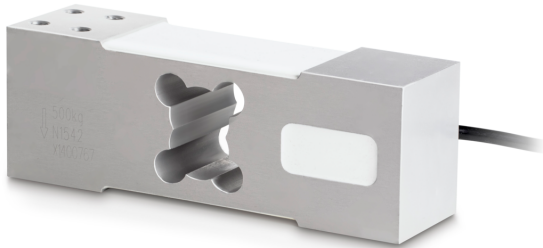


SAUTER CP 250-3P8

KERN

Single-point load cell made of aluminium



Load cell - Isolation resistance - [Min]	5000 M Ω
Load cell - Combined error	0,02%
Temperature coefficient - characteristic value	$\leq \pm 0.020\%FS/10\text{ }^{\circ}C$
Zero balance	$\leq \pm 2.0\%FS$
Temperature coefficient - zero signal	$\leq \pm 0.0175\%FS/10\text{ }^{\circ}C$
Creep error (30 minutes)	$\leq \pm 0.0167\%FS$
Safe overload	120%
Ultimate overload	150%

Functions

IP protection - complete device	IP65
---------------------------------	------

Construction

Material	aluminium
Design	Singlepoint load cell
Maximum platform size	600×600 mm
Cable length	3 m
Mounting - force application	4 × threaded hole M8
Mounting - force dissipation	4 × threaded hole M8

Environmental conditions

Ambient temperature [Min]	-35 °C
Ambient temperature [Max]	65 °C
Use temperature [Min]	-10 °C
Use temperature [Max]	40 °C

Approval

CE mark	✓
---------	---

Product information

GTIN/EAN number	4045761308350
Trade number	84239010
REACH classification	no prohibited substances

Packing & Shipping

Shipping method	Parcel service
Delivery time	1 d
Dimensions packaging (W×D×H)	180×110×75 mm
Net weight approx.	1,8 kg
Gross weight approx.	1,8 kg
Shipping weight	1,75 kg

Category

Brand	Sauter
Product category	Measuring cell
Product group	Load cell
Product family	CP P8

Measuring System

Weighing capacity [Max]	250 kg
Load cell - characteristic value - nominal	2 mV/V
Load cell - characteristic value - variance	0,2 mV/V
Load cell OIML class	C3
Load cell connection	6-wire
Power supply + Colour	red
Power supply - Colour	black
Signal + Colour	green
Signal - Colour	white
Sense + Colour	75392
Sense - Colour	75412
Load cell - Resolution (verifiable)	3000 e
Measuring applications	mass
Directions of force	compression
Load cell - Y-value	10000
Load cell - Input resistance - nominal	409 Ω
Load cell - Input resistance - variance	6 Ω
Load cell - Output resistance - nominal	350 Ω
Load cell - Output resistance - variance	3 Ω
Load cell - Recommended excitation voltage [Min]	5 V
Load cell - Recommended excitation voltage [Max]	12 V

SAUTER CP 250-3P8

Single-point load cell made of aluminium

KERN

Pictograms

STANDARD

