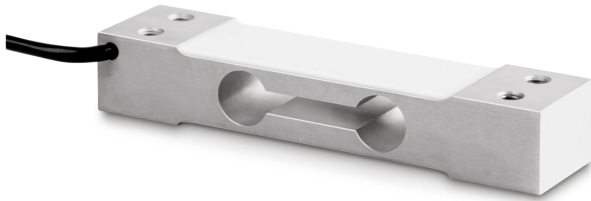


# SAUTER CP 15-3-3P1

**KERN**

Single-point load cell made of anodised aluminium with extra-long cable



Load cell - Combined error	0,023%
Temperature coefficient - characteristic value	$\leq \pm 0.0175\%FS/10\text{ }^{\circ}C$
Zero balance	$\leq \pm 2.0\%FS$
Temperature coefficient - zero signal	$\leq \pm 0.02\%FS/10\text{ }^{\circ}C$
Creep error (30 minutes)	$\leq \pm 0.0167\%FS$
Safe overload	150%
Ultimate overload	300%

## Functions

IP protection - complete device	IP65
---------------------------------	------

## Construction

Material	aluminium
Design	Singlepoint load cell
Dimension (W×D×H)	130×30×22 mm
Maximum platform size	250×350 mm
Cable length	3 m
Mounting - force application	2 × threaded hole M6
Mounting - force dissipation	2 × threaded hole M6

## Environmental conditions

Ambient temperature [Min]	-35 °C
Ambient temperature [Max]	65 °C
Use temperature [Min]	-10 °C
Use temperature [Max]	40 °C
Storage temperature [Min]	-40 °C
Storage temperature [Max]	70 °C

## Approval

CE mark	✓
---------	---

## Product information

GTIN/EAN number	4045761363250
Trade number	84239010
REACH classification	no prohibited substances

## Packing & Shipping

Shipping method	Parcel service
Delivery time	1 d
Dimensions packaging (W×D×H)	165×100×45 mm
Net weight approx.	0,25 kg
Gross weight approx.	0,30 kg
Shipping weight	0,27 kg

## Category

Brand	Sauter
Product category	Measuring cell
Product group	Load cell
Product family	CP P1

## Measuring System

Weighing capacity [Max]	15 kg
Load cell - characteristic value - nominal	2 mV/V
Load cell - characteristic value - variance	0,2 mV/V
Load cell OIML class	C3
Load cell connection	4-wire
Power supply + Colour	red
Power supply - Colour	black
Signal + Colour	green
Signal - Colour	white
Load cell - Resolution (verifiable)	3000 e
Load cell - Dead load [Min] (%)	0%
Measuring applications	mass
Directions of force	compression
Load cell - Y-value	10000
Load cell - Input resistance - nominal	409 $\Omega$
Load cell - Input resistance - variance	6 $\Omega$
Load cell - Output resistance - nominal	350 $\Omega$
Load cell - Output resistance - variance	3 $\Omega$
Load cell - Recommended excitation voltage [Min]	5 V
Load cell - Recommended excitation voltage [Max]	12 V
Load cell - Isolation resistance - [Min]	5000 M $\Omega$

# SAUTER CP 15-3-3P1

Single-point load cell made of anodised aluminium with extra-long cable

**KERN**

## Pictograms

### STANDARD

---



### OPTION

---

