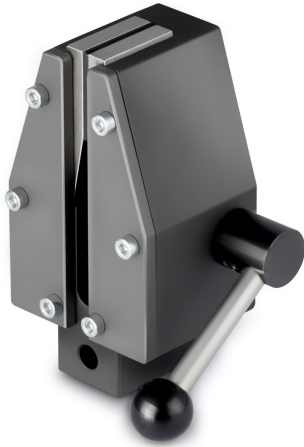


SAUTER AD 9090

KERN

Wedge tension clamp for tensile force tests



Pictograms

STANDARD



Category

Brand	Sauter
Product category	Clamp
Product group	Wedge Clamp

Construction

Dimensions completely mounted (W×D×H)	112×80×62 mm
Material	steel
Mounting - force dissipation	Threaded hole M6 External thread M12
Maximum clamp width	30 mm
Clamping width	8 mm
Tensile/compressive force [Max]	10 kN

Environmental conditions

Storage temperature [Min]	-10 °C
Storage temperature [Max]	40 °C

Packing & Shipping

Delivery time	14 d
Dimensions packaging (W×D×H)	112×80×62 mm
Shipping method	Parcel service
Net weight approx.	1,4 kg
Gross weight approx.	1,4 kg
Shipping weight	1,4 kg

Product information

GTIN/EAN number	4045761178502
Trade number	90278990
REACH classification	no prohibited substances