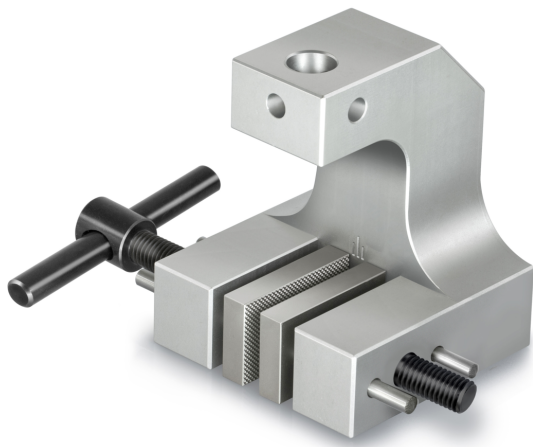


SAUTER AD 9070

KERN

Screw Tension Clamp for laboratory tensile force measurements



Pictograms

STANDARD



Category

Brand	Sauter
Product category	Clamp
Product group	Screw tension clamp

Construction

Dimensions completely mounted (W×D×H)	170×102×50 mm
Material	aluminium
Mounting - force dissipation	Threaded hole M6 External thread M12
Maximum clamp width	50 mm
Clamping width	15 mm
Tensile/compressive force [Max]	5 kN

Environmental conditions

Storage temperature [Min]	-10 °C
Storage temperature [Max]	40 °C

Packing & Shipping

Delivery time	14 d
Dimensions packaging (W×D×H)	170×102×50 mm
Shipping method	Parcel service
Net weight approx.	1,4 kg
Gross weight approx.	1,4 kg
Shipping weight	1,3 kg

Product information

GTIN/EAN number	4045761178465
Trade number	90278990
REACH classification	no prohibited substances