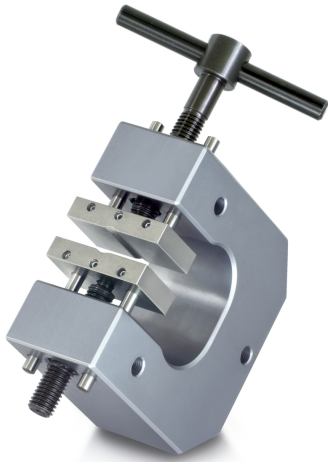


SAUTER AD 9050

KERN

Screw Tension Clamp for laboratory tensile force measurements



Pictograms

STANDARD



Category

| | |
|------------------|---------------------|
| Brand | Sauter |
| Product category | Clamp |
| Product group | Screw tension clamp |

Construction

| | |
|---------------------------------------|---|
| Dimensions completely mounted (W×D×H) | 180×110×50 mm |
| Material | aluminium |
| Mounting - force dissipation | Threaded hole M6 External thread M12 |
| Maximum clamp width | 100 mm |
| Clamping width | 28 mm |
| Tensile/compressive force [Max] | 5 kN |

Environmental conditions

| | |
|---------------------------|--------|
| Storage temperature [Min] | -10 °C |
| Storage temperature [Max] | 40 °C |

Packing & Shipping

| | |
|------------------------------|----------------|
| Delivery time | 14 d |
| Dimensions packaging (W×D×H) | 180×110×50 mm |
| Shipping method | Parcel service |
| Net weight approx. | 2,6 kg |
| Gross weight approx. | 2,6 kg |
| Shipping weight | 2,6 kg |

Product information

| | |
|----------------------|--------------------------|
| GTIN/EAN number | 4045761178434 |
| Trade number | 90278990 |
| REACH classification | no prohibited substances |