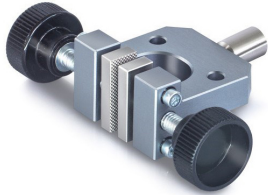


SAUTER AD 9005

KERN

Screw Tension Clamp for laboratory tensile force measurements incl. jaws with pyramid grip



Pictograms

STANDARD



Category

Brand	Sauter
Product category	Clamp
Product group	Screw tension clamp

Construction

Dimensions completely mounted (W×D×H)	82×40×25 mm
Material	aluminium
Mounting - force dissipation	Threaded hole M6
Maximum clamp width	100 mm
Clamping width	8 mm
Tensile/compressive force [Max]	400 N

Environmental conditions

Storage temperature [Min]	-10 °C
Storage temperature [Max]	40 °C

Packing & Shipping

Delivery time	14 d
Dimensions packaging (W×D×H)	82×40×25 mm
Shipping method	Parcel service
Net weight approx.	0,10 kg
Gross weight approx.	0,10 kg
Shipping weight	0,1 kg

Product information

GTIN/EAN number	4045761178250
Trade number	90278990
REACH classification	no prohibited substances