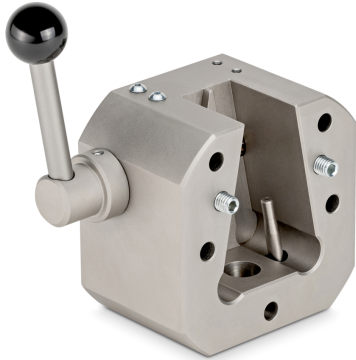


# SAUTER AD 0095

**KERN**

Wedge clamp without jaws



## Pictograms

STANDARD



### Category

Brand	Sauter
Product category	Clamp
Product group	Wedge Clamp

### Construction

Dimension housing (W×D×H)	140×98×65 mm
Dimensions completely mounted (W×D×H)	140×98×65 mm
Material	steel, nickel-plated
Maximum clamp width	50 mm
Clamping width	13 mm
Tensile/compressive force [Max]	20 kN

### Environmental conditions

Storage temperature [Min]	-10 °C
Storage temperature [Max]	40 °C

### Packing & Shipping

Delivery time	14 d
Dimensions packaging (W×D×H)	140×98×65 mm
Shipping method	Parcel service
Net weight approx.	3,8 kg
Gross weight approx.	3,8 kg
Shipping weight	3,8 kg

### Product information

GTIN/EAN number	4045761178687
Trade number	90278990
REACH classification	no prohibited substances