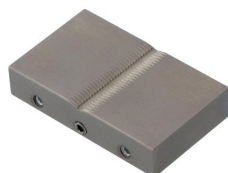


SAUTER AD 0075

Jaws with corrugated grip

KERN



Pictograms

STANDARD



Category

Brand	Sauter
Product category	Measurementtechnology
Product group	Jaws, corrugated grip

Construction

Dimension (W×D×H)	30×30×8 mm
Dimension housing (W×D×H)	30×30×8 mm
Dimensions completely mounted (W×D×H)	30×30×8 mm
Material	steel, nickel-plated
Maximum clamp width	50 mm
Clamping width	8 mm
Tensile/compressive force [Max]	10 kN

Environmental conditions

Storage temperature [Min]	-10 °C
Storage temperature [Max]	40 °C

Packing & Shipping

Delivery time	14 d
Dimensions packaging (W×D×H)	30×30×8 mm
Shipping method	Parcel service
Net weight approx.	0,50 kg
Gross weight approx.	0,50 kg
Shipping weight	0,5 kg

Product information

GTIN/EAN number	4045761175457
Trade number	90278990
REACH classification	no prohibited substances