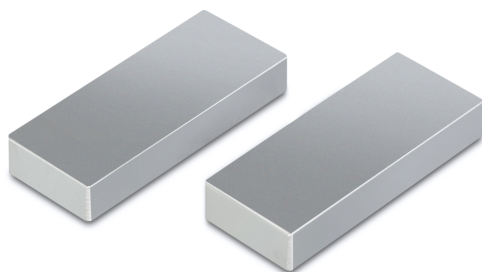


# SAUTER AD 0055

Jaws with smooth surface

# KERN



## Pictograms

STANDARD



## Category

Brand	Sauter
Product category	Measurementtechnology
Product group	Jaws, smooth

## Construction

Dimension (W×D×H)	30×50×8 mm
Dimension housing (W×D×H)	30×50×8 mm
Dimensions completely mounted (W×D×H)	30×50×8 mm
Material	steel, nickel-plated
Material display housing	steel
Maximum clamp width	50 mm
Clamping width	28 mm
Tensile/compressive force [Max]	5 kN

## Environmental conditions

Storage temperature [Min]	-10 °C
Storage temperature [Max]	40 °C

## Packing & Shipping

Delivery time	14 d
Dimensions packaging (W×D×H)	30×50×8 mm
Shipping method	Parcel service
Net weight approx.	0,50 kg
Gross weight approx.	0,50 kg
Shipping weight	0,5 kg

## Product information

GTIN/EAN number	4045761175273
Trade number	90278990
REACH classification	no prohibited substances