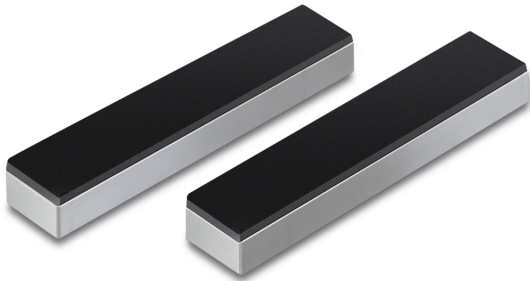


SAUTER AD 0010

Jaws with rubberised surface

KERN



Pictograms

STANDARD



Category

Brand	Sauter
Product category	Measurementtechnology
Product group	Jaws, rubberised

Construction

Dimension (W×D×H)	50×10×8 mm
Dimension housing (W×D×H)	50×10×8 mm
Dimensions completely mounted (W×D×H)	50×10×8 mm
Material	steel, nickel-plated
Material display housing	steel
Maximum clamp width	50 mm
Clamping width	4 mm
Tensile/compressive force [Max]	400 N

Environmental conditions

Storage temperature [Min]	-10 °C
Storage temperature [Max]	40 °C

Packing & Shipping

Delivery time	14 d
Dimensions packaging (W×D×H)	50×10×8 mm
Shipping method	Parcel service
Net weight approx.	0,10 kg
Gross weight approx.	0,10 kg
Shipping weight	0,1 kg

Product information

GTIN/EAN number	4045761174696
Trade number	90278990
REACH classification	no prohibited substances