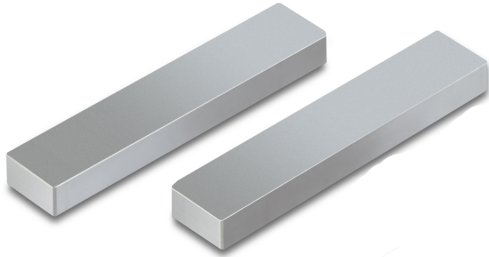


# SAUTER AD 0009

**KERN**

Jaws with smooth surface



## Pictograms

### STANDARD



## Category

Brand	Sauter
Product category	Measurementtechnology
Product group	Jaws, smooth

## Construction

Dimension (W×D×H)	50×10×8 mm
Dimension housing (W×D×H)	50×10×8 mm
Dimensions completely mounted (W×D×H)	50×10×8 mm
Material	steel
Material display housing	steel
Maximum clamp width	50 mm
Clamping width	6 mm
Tensile/compressive force [Max]	400 N

## Environmental conditions

Storage temperature [Min]	-10 °C
Storage temperature [Max]	40 °C

## Packing & Shipping

Delivery time	14 d
Dimensions packaging (W×D×H)	50×10×8 mm
Shipping method	Parcel service
Net weight approx.	0,10 kg
Gross weight approx.	0,10 kg
Shipping weight	0,1 kg

## Product information

GTIN/EAN number	4045761174689
Trade number	90278990
REACH classification	no prohibited substances