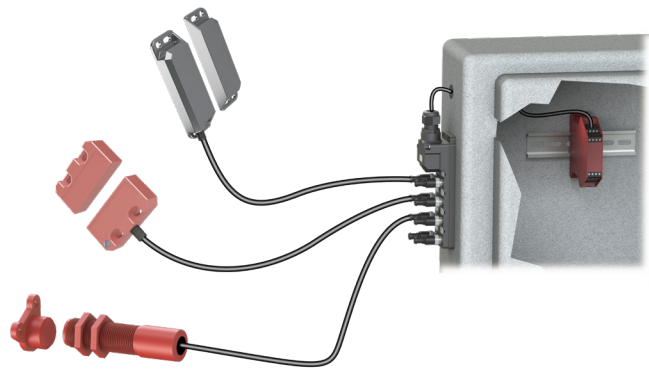


M12 Connection Box For Use With Magnetic and RFID Coded Non-Contact Switches



140210



Features

- Allows you to connect up to eight switches in series to a single safety controller
- Configured for dual channel to a safety controller
- Shorting plugs must be inserted into all unused ports
- M20 conduit exit; M20 cable gland accepts cable OD 6.5-12.0 mm [0.26-0.47 in]

IDEM Junction Block Selection Chart

Part Number	Price	Description	Ports	Input Connections	Output Connection	Indicators
For use with IDEM coded and RFID switches only:						
140210	\$160.00	IDEM junction block for use with IDEM coded and RFID switches only	8	8-pin M12 sockets	Cable clamp for field-wired connection	24VDC LED
140207	\$28.00	Shorting plug, 8 pole, for use with IDEM coded and RFID connection blocks	-	-	-	-
For use with IDEM magnetic switches only:						
140213	\$160.00	IDEM junction block for use with IDEM magnetic switches only	8	8-pin M12 sockets	Cable clamp for field-wired connection	24VDC LED
140209	\$28.00	Shorting plug, 8-pole, for use with IDEM magnetic connection blocks	-	-	-	-

NOTE: The appropriate shorting plug must be inserted into all unused ports.

IDEM Junction Block Accessories Selection Chart

Part Number	Price	Description	Connection	Length	Cable Jacket
140201	\$37.50	Connection cable	8-pole M12 axial female to 8-pole M12 axial male	2m [6.56 ft]	Black PVC
140202	\$46.50	Connection cable	8-pole M12 axial female to 8-pole M12 axial male	5m [16.40 ft]	Black PVC
140203	\$56.00	Connection cable	8-pole M12 axial female to 8-pole M12 axial male	10m [32.81 ft]	Black PVC



140201



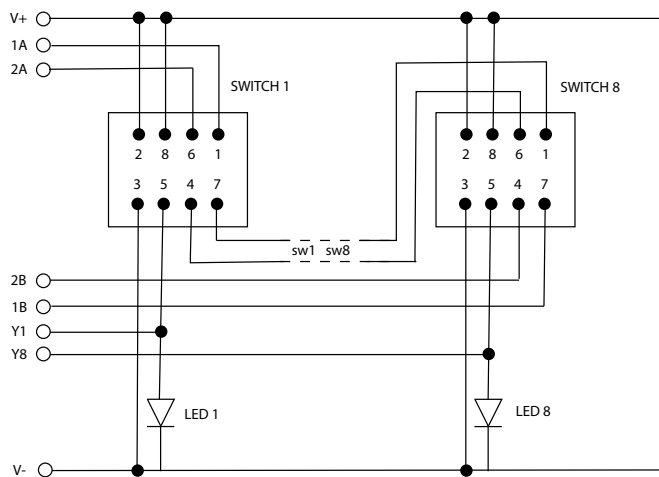
140207

M12 Connection Box

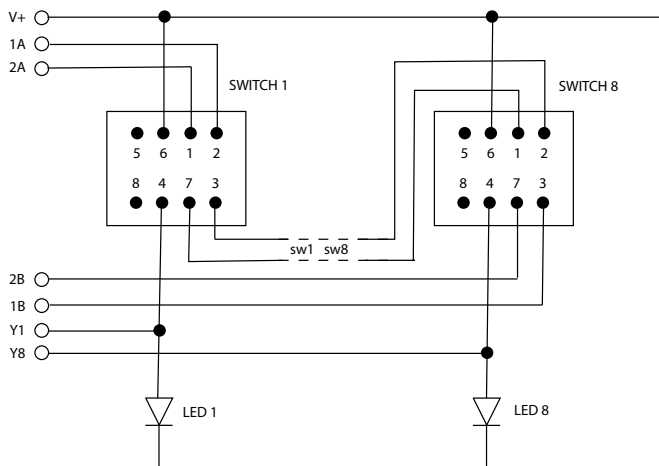
For Use With Magnetic and RFID Coded Non-Contact Switches

M12 Connection Box Specifications	
Port Connection Type	8x8 pin M12 female sockets
Operating Temperature	-20 to +40°C [-4 to +104°F]
Supply Voltage	24VDC ±10%
Maximum Current	500mA
Body Material	Polyester
Internal Terminals	Screw type clamp for 16-30 AWG conductors
Cable Exit	M20 x 1.5 mm cable gland (M20 cable gland accepts cable OD 6.5 mm to 12.0 mm [0.26 in to 0.47 in])
Mounting	2xM4 bolts, 4.6 mm [0.18 in] diameter clearance holes
Accessory	Shorting plug for unused ports
LEDs (1-8)	Red, auxiliary indication of switch open

Connections (140210) for Coded and RFID Switches Only



Connections (140213) for Magnetic Switches Only



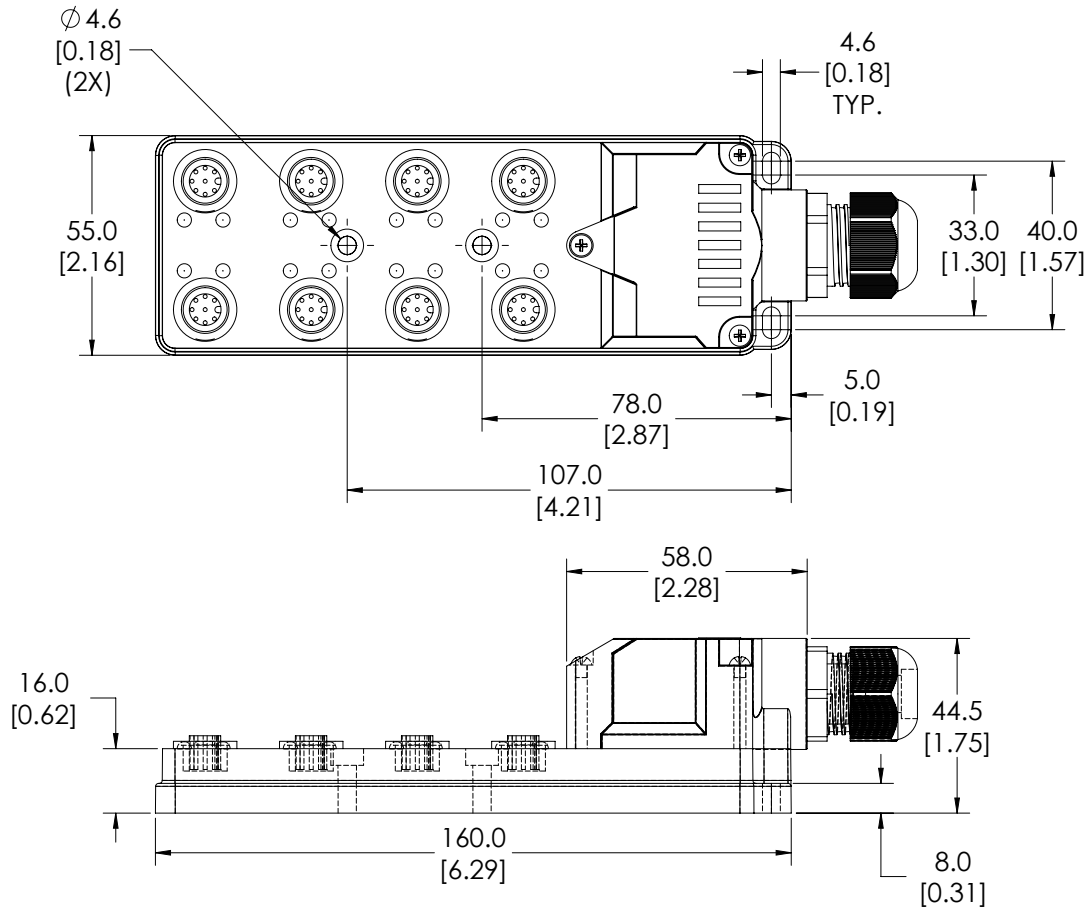
Output Terminal Connections			
Terminal	Output	Indication	LED Status
Y1	Auxiliary out +24VDC	Switch 1 open	LED 1 on
Y2	Auxiliary out +24VDC	Switch 2 open	LED 2 on
Y3	Auxiliary out +24VDC	Switch 3 open	LED 3 on
Y4	Auxiliary out +24VDC	Switch 4 open	LED 4 on
Y5	Auxiliary out +24VDC	Switch 5 open	LED 5 on
Y6	Auxiliary out +24VDC	Switch 6 open	LED 6 on
Y7	Auxiliary out +24VDC	Switch 7 open	LED 7 on
Y8	Auxiliary out +24VDC	Switch 8 open	LED 8 on
2A	NC2 closed when all switches are closed (series connection)		
2B			
1A	NC1 closed when all switches are closed (series connection)		
1B			
V+	Supply +24VDC		
V-	Supply 0VDC		

M12 Connection Box

For Use With Magnetic and RFID Coded Non-Contact Switches

Dimensions

mm [in]



See our website www.AutomationDirect.com for complete engineering drawings.