

## Heavy Duty Products, IEC Pin and Sleeve, Inlet, Switched, 60/63A 3-Phase 347/600V AC, 4-Pole 5-Wire Grounding, NEMA 4X/IP69K

By Hubbell Wiring Device-Kellems  
Catalog # [HBL560B6W](#)

IEC Pin and Sleeve Switched Inlet, 60/63A

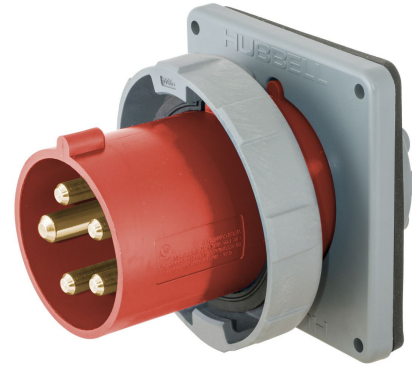
### Features

- Mates with existing installed base of IEC 60309-2 pin and sleeve devices
- Approved as a disconnecting means for motor circuits and branch circuits
- UL Type 4X, 12 and IP69k environmental ratings
- Impact and corrosion-resistant PBT that is color coded by voltage
- Unswitched ground and power indicating LED lights

### Conductor

Number Of Wires                      5-Wire  
Number Of Poles                      4-Pole

### Current



Current / Amperage Rating	60/63 A
Amperage Rating	60/63 A
Voltage Rating Description	200/346-240/415 VAC
Voltage Rating	200/346-240/415 VAC

### General

Type	Watertight Inlet
Series	Advantage® Series
UPC	783585479316
Style	IP69k NEMA 4X
Color	Red

### Product Assets

[Catalog \[English\]](#)  
[Installation Manual \[French, English\]](#)