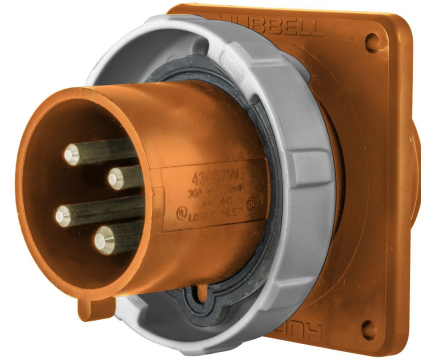


## Heavy Duty Products, IEC Pin and Sleeve, Inlet, Switched, 60A 125/250V, 3-Pole 4-Wire Grounding, NEMA 4X/IP69K

By Hubbell Wiring Device-Kellems  
Catalog # [HBL5460B12W](#)

IEC Pin and Sleeve Switched Inlet, 60A



### Features

- Mates with existing installed base of IEC 60309-2 pin and sleeve devices
- Approved as a disconnecting means for motor circuits and branch circuits
- UL Type 4X, 12 and IP69k environmental ratings
- Impact and corrosion-resistant PBT that is color coded by voltage
- Unswitched ground and power indicating LED lights

### Conductor

Number Of Wires	4-Wire
Number Of Poles	3-Pole

### Current

Current / Amperage Rating	60 A
---------------------------	------

Amperage Rating	60 A
Voltage Rating Description	125/250 VAC
Voltage Rating	125/250 VAC

### General

Type	Watertight Inlet
Series	Advantage® Series
UPC	783585479255
Style	IP69k NEMA 4X
Color	Orange

### Logistics

Carton Quantity	10
-----------------	----

### Product Assets

[Catalog \[English\]](#)

[Installation Manual \[French, English\]](#)