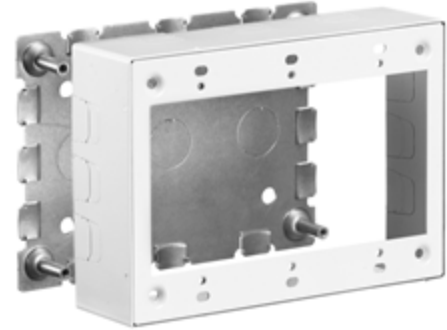


**Raceway**  
**Metal Raceway**  
**3-Gang Standard Box**

# HUBBELL

## Features

- For use with HBL500, HBL700 and HBL750 Series Raceway
- Hubbell Handi-Screw® eases installation by eliminating difficult to install long screws
- Rounded corners with no sharp edges
- One seam construction provides a “clean” look
- Box design allows standard wallplates to be mounted flush with virtually no perimeter profile exposed



## Ordering Information

| Description         | Color | UPC Number   | Catalog Number |
|---------------------|-------|--------------|----------------|
| 3-Gang Standard Box | White | 783585423562 | HBL57483WA     |

## Listings

UL Listed  
CSA Certified

## Specifications

|        |       |
|--------|-------|
| Height | 4.54" |
| Width  | 6.45" |
| Length | 1.75" |

## Online Resources

eCatalog