

HUBBELL Premise Wiring

SystemOne, A\V Round Flush Floorboxes, Galvanized Stamped Steel, 3.50" Minimum Dept of Pour

By Hubbell Premise Wiring
Catalog # [S1SFBAV](#)

SystemOne Round Flush Floorbox, Galvanized Stamped, 3.5" Min
Dept of Pour

Features

- Supplied with concrete cover and closure plugs
- Accommodates high-capacity multimedia applications
- Leveling feet provide before pour adjustability

Application

For Use in Concrete Floors

Specifications

Industry Standard(s)	<ul style="list-style-type: none">• cULus• UL514
EU RoHS Indicator	No

Conductor

Cable Entry	From Top
-------------	----------

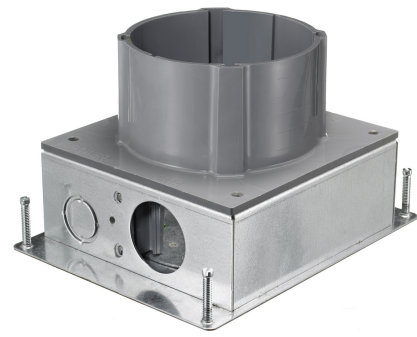
Configuration

Knockouts	1) 3/4 in and 1 in Concentric, 1) 1 1/2 in NPT Hub
Mounting Method	Cast Into Concrete

Dimensions

Width	9.5 in
Height	3 in
Length	7.5 in
Dimensions	7.5 in x 9.5 in x 3 in

General



Construction

Type	Stamped
Series	Round Box
Material	Flush - S1 Series
Specifications	Composite

Construction

Type	Stamped
Series	Round Box
Material	Flush - S1 Series
Specifications	Composite
	<ul style="list-style-type: none">• Cubic Inch - 177.5 cu. in. (2909.7 cm³)• Min. Depth of Pour - 3.50" (88.9)• Power Entries - 3/4", 1" Concentric KO

Cover Shape

UPC	783585371665
Application - For Use On	Concrete
Color	Gray

Cover Shape

UPC	783585371665
Application - For Use On	Concrete
Color	Gray

Logistics

Carton Quantity	1
-----------------	---

Operational

Service	<ul style="list-style-type: none">• Single• Multi
---------	--

Product Assets

- [Catalog \[English\]](#)
- [Catalog \[English\]](#)
- [Catalog Page \[English\]](#)
- [Catalog Page \[English\]](#)
- [Catalog Page \[English\]](#)