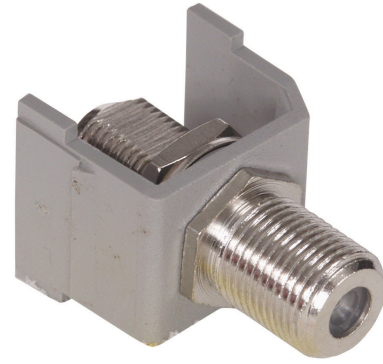


HUBBELL Premise Wiring

Snap-Fit, F-Coax Connector, Gray

By Hubbell Premise Wiring
Catalog # [SFFGX](#)

Snap-Fit, F-Coax Connector, Gray



Features

- Snap-Fit
- F-Coax Connector
- Gray

Specifications

| | |
|--------------------------|---|
| Environmental Conditions | Indoor Dry Unless Protected By Additional Means |
| EU RoHS Indicator | Yes |

Conductor

| | |
|---------|------------------|
| Contact | Beryllium Copper |
|---------|------------------|

Current

| | |
|--------------------|---------------------|
| Withstand Voltage | 1000V RMS, 1414V DC |
| Connectivity | Female to Female |
| Contact Resistance | 100 Ohm |

Dimensions

| | |
|--------------|------------------------|
| Display Size | Standard Sized Product |
|--------------|------------------------|

General

| | |
|--------|-----------|
| Series | Accessory |
|--------|-----------|

| | |
|--|--|
| OEM Brand Name | Hubbell Premise Wiring |
| Style | Nickel Plated F Coax Coupler |
| Color | Gray |
| Item Type | iSTATION RCA and F-Keystone Connectors |
| Material - Mounting Hardware Type Specifications | Snap-On- Snap-Fit Snap-Fit Connector <ul style="list-style-type: none">• Device Type - Snap-Fit Connector Fittings• Snap-Fit Item - Nickel Plated F Coax Coupler Module |
| UPC | 662620809779 |

Logistics

| | |
|-----------------|-------|
| Carton Quantity | 25 |
| Pallet Quantity | 10400 |

Operational

| | |
|--------------------|---------|
| Temperature Rating | Per TIA |
|--------------------|---------|

Product Assets

- [Catalog \[English\]](#)
- [Catalog Page \[English\]](#)
- [Catalog Page \[English\]](#)
- [Catalog Page \[English\]](#)