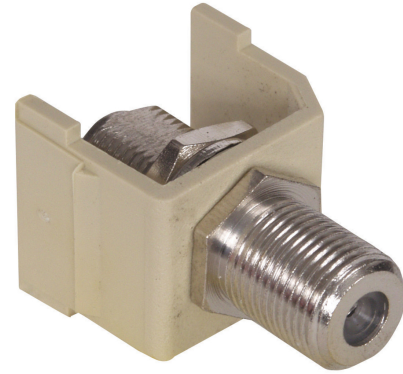


HUBBELL Premise Wiring

Snap-Fit, F-Coax Connector, Electric Ivory

By Hubbell Premise Wiring
Catalog # [SFFEX](#)

Snap-Fit, F-Coax Connector, Electric Ivory



Features

- Snap-Fit
- F-Coax Connector
- Electric Ivory

Application

Snap-Fit F-Connector

Specifications

EU RoHS Indicator Yes

Current

Withstand Voltage 1000V RMS, 1414V DC
Connectivity Female to Female
Contact Resistance 100 Ohm

General

OEM Brand Name	Hubbell Premise Wiring
Style	Nickel, 2GHz
Material - Mounting Hardware	Snap-On- Snap-Fit
Type	F-Type
UPC	662620809786

Logistics

Carton Quantity	25
Pallet Quantity	10400

Operational

Temperature Rating	Per TIA
--------------------	---------

Product Assets

[Catalog \[English\]](#)
[Catalog Page \[English\]](#)
[Catalog Page \[English\]](#)
[Catalog Page \[English\]](#)