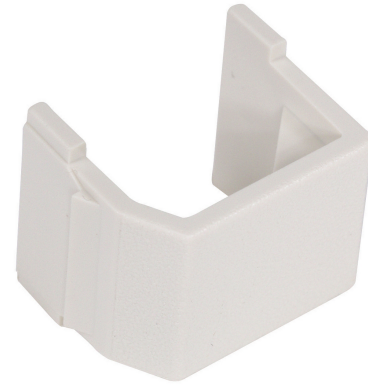


HUBBELL Premise Wiring

Snap-Fit, Keystone, Blank, Office White, 10 Pack

By Hubbell Premise Wiring
Catalog # [SFB10](#)

Snap-Fit, Keystone, Blank, Office White, 10 Pack



Features

- Snap-Fit
- Keystone
- Blank
- Office White
- 10 Pack

Application

Snap-Fit Fill in Blanks, Textured

Specifications

Environmental Conditions	Indoor Dry Unless Protected By Additional Means
EU RoHS Indicator	Yes

Conductor

Contact	Beryllium Copper
---------	------------------

Current

Withstand Voltage	1000V RMS, 1414V DC
Connectivity	Plug-N-Play
Contact Resistance	100 Ohm

Dimensions

Display Size	Standard Sized Product
--------------	------------------------

General

Series	Accessory
OEM Brand Name	Hubbell Premise Wiring
Style	Blank
Color	Office White
Item Type	iSTATION RCA and F-Keystone Connectors
Material - Mounting Hardware Type	Snap-On- Snap-Fit Modular Connectors
UPC	662620780603

Logistics

Carton Quantity	20
Pallet Quantity	3240

Operational

Temperature Rating	Per TIA
--------------------	---------

Product Assets

- [Catalog \[English\]](#)
- [Catalog Page \[English\]](#)
- [Catalog Page \[English\]](#)
- [Catalog Page \[English\]](#)
- [Catalog Page \[English\]](#)
- [Catalog Page \[English\]](#)
- [Catalog Page \[English\]](#)