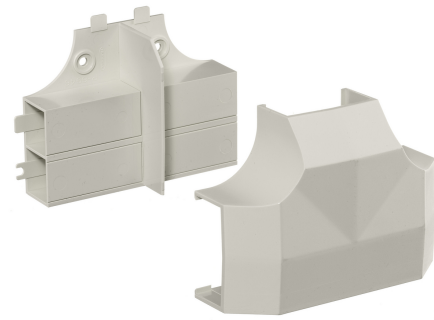


HUBBELL Premise Wiring

Non-Metallic Raceway, Latching WallTrak, WALLTRAK2, Base and Cover, Tee Fitting

By Hubbell Premise Wiring
Catalog # [PW2TCBC](#)

Non-Metallic Raceway Latching WallTrak, WALLTRAK2, Base and
Cover, Tee Fitting



Features

- Full capacity 1¼ in. bend radius external elbow

Application

Tee Fitting Base and Cover

Performance

Environmental - Flame Rating - UL94V-0, Environmental -
Temperature Range - -25.6° to 158° F

Specifications

Non Hazardous Location	Non-Hazardous
EU RoHS Indicator	Yes
Standards - RoHS Compliance Status	CM
Industry Standard(s)	<ul style="list-style-type: none">• CSA Standard C22.2 no. 62• E118895 / E119190• UL Standard UL 5A

Configuration

Knockouts None

Dimensions

Width 4.2 in

General

Series	PW2
Style	Base and Cover
Color	Office White
Item Type	PW2 WallTrak (Latching) Series
Construction	Extruded
Type	Tees
Material	Non-Metallic
Specifications	<ul style="list-style-type: none">• Crush Resistance - 300 lbs.• Impact Resistance - 5 ft. lbs.• Material - UV Stabilized PVC
UPC	783585090740

Logistics

Carton Quantity	5
Pallet Quantity	1125

Product Assets

[Catalog \[English\]](#)
[Catalog \[English\]](#)
[Catalog Page \[English\]](#)