

# HUBBELL Premise Wiring

## Non-Metallic Raceway, Non-Latching PremiseTrak, PREM-TRAK1, Tee Cover Fitting

By Hubbell Premise Wiring  
Catalog # [PTITC](#)

Non-Metallic Raceway, Non-Latching PremiseTrak, PREM-TRAK1,  
Tee Cover Fitting

### Features

- For T-connection off PremiseTrak® Raceway

### Performance

Environmental - Flammability - UL94V-0, Environmental -  
Operating Temperature - -25.6° to 158° F

### Specifications

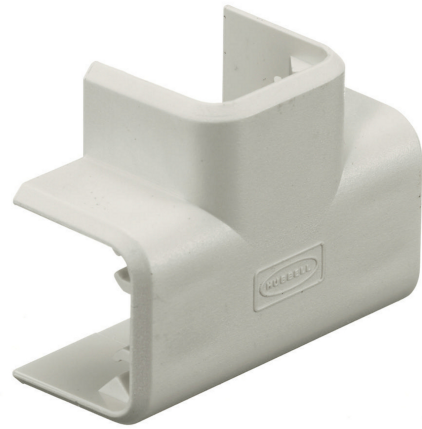
Industry Standard(s) 

- CSA Standard C22.2 no. 62
- E118895 / E119190
- UL Standard UL 5A

EU RoHS Indicator Contact Manufacturer  
Standards - RoHS Compliance CM  
Status

### General

Item Type PT1 PremiseTrak Series



### Type

Series

Material

Specifications

UPC

Style

Color

Tees

PT1

Non-Metallic

- Crush Resistance - 300 lbs
- Impact Resistance - 5 ft. lbs.
- Material - UV Stabilized PVC

783585337944

Cover Only

Office White

### Logistics

Carton Quantity

1

Pallet Quantity

2250

### Product Assets

[Catalog \[English\]](#)

[Catalog \[English\]](#)

[Catalog Page \[English\]](#)