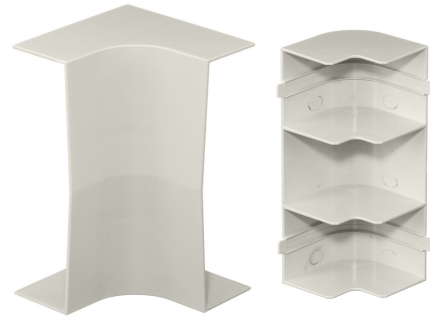


HUBBELL Premise Wiring

Non-Metallic Raceway, Super BaseTrak, Baseand Cover, Internal Elbow

By Hubbell Premise Wiring
Catalog # [PS3IEBC](#)

Non-Metallic Raceway Super BaseTrak, Baseand Cover, Internal Elbow



Features

- Full capacity 1¼ in. bend radius internal elbow

Performance

Environmental - Flame Rating - UL94V-0, Environmental -
Temperature Range - -25.6° to 158° F

Specifications

Industry Standard(s)	<ul style="list-style-type: none">• CSA Standard C22.2 no. 62• E118895 / E119190• UL Standard UL 5A
EU RoHS Indicator	Contact Manufacturer

General

Item Type	PS3 Super BaseTrak Series
Type	Elbows

Series

Material
Specifications

PS3

Non-Metallic

- Crush Resistance - 300 lbs.
- Impact Resistance - 5 ft. lbs.
- Material - UV Stabilized PVC

UPC

Style
Color

783585090139

Internal
Office White

Logistics

Carton Quantity 10

Product Assets

[Catalog \[English\]](#)
[Catalog \[English\]](#)
[Catalog Page \[English\]](#)