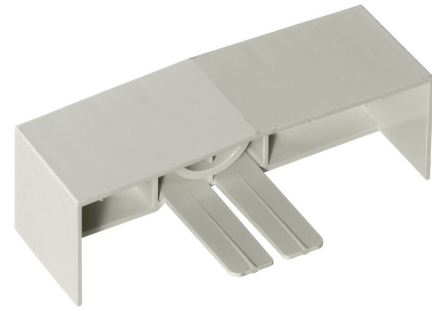


HUBBELL Premise Wiring

Non-Metallic Raceway, Super BaseTrak, End Cap

By Hubbell Premise Wiring
Catalog # [PS3EC](#)



Non-Metallic Raceway Super BaseTrak, End Cap

Features

- For closing end of PS3 Super BaseTrak Raceway

Performance

Environmental - Flame Rating - UL94V-0, Environmental -
Temperature Range - -25.6° to 158° F

Specifications

Industry Standard(s)	<ul style="list-style-type: none">• CSA Standard C22.2 no. 62• E118895 / E119190• UL Standard UL 5A
EU RoHS Indicator	Contact Manufacturer

General

Item Type	PS3 Super BaseTrak Series
Type	Miscellaneous Fittings

Series

Material
Specifications

PS3

Non-Metallic

- Crush Resistance - 300 lbs.
- Impact Resistance - 5 ft. lbs.
- Material - UV Stabilized PVC

UPC

Style
Color

783585090078

End Cap

Office White

Logistics

Carton Quantity	10
-----------------	----

Product Assets

- [Catalog \[English\]](#)
- [Catalog \[English\]](#)
- [Catalog Page \[English\]](#)