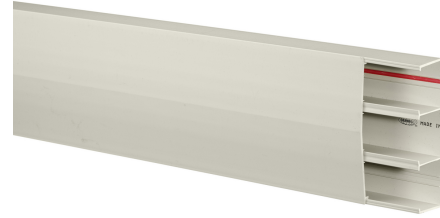


HUBBELL Premise Wiring

Non-Metallic Raceway, Super BaseTrak, Base, Cover, 10'

By Hubbell Premise Wiring
Catalog # [PS3BC10](#)



Non-Metallic Raceway Super BaseTrak, Base, Cover, 10'

Features

- UL Listed and CSA Certified to 600 volts
- Single and two channel latching raceways are dual-rated for both power and data applications, reducing inventory requirements

Application

10' Base and Cover

Performance

Environmental - Flame Rating - UL94V-0, Environmental -
Temperature Range - -25.6° to 158° F

Specifications

Non Hazardous Location	Non Hazardous
Industry Standard(s)	<ul style="list-style-type: none">• CSA Standard C22.2 no. 62• E118895 / E119190• UL Standard UL 5A
EU RoHS Indicator	Yes

Configuration

Knockouts	None
-----------	------

Dimensions

Width	6.7 in
Length	10 ft

General

Item Type	PS3, 3-Channel Super BaseTrak
Construction	Extruded Plastic
Type	Base and Cover
Enclosure Type	NEMA 1 Rating
Series	PS3
Cover Type	Removable
Material	Thermoplastic
Specifications	<ul style="list-style-type: none">• Crush Resistance - 300 lbs.• Impact Resistance - 5 ft. lbs.• Length - 10 ft. (3m)• Material - UV Stabilized PVC
UPC	783585090047
Style	Three Channel
Color	Office White

Product Assets

[Catalog \[English\]](#)
[Catalog \[English\]](#)
[Catalog Page \[English\]](#)