

# HUBBELL Premise Wiring

## Non-Metallic Raceway, Latching PremiseTrak, Base and Cover, Tee Fitting

By Hubbell Premise Wiring  
Catalog # [PPITCBC](#)

Non-Metallic Raceway Latching PremiseTrak, Base and Cover, Tee Fitting

### Features

- Full capacity 1¼ in. bend radius tee

### Performance

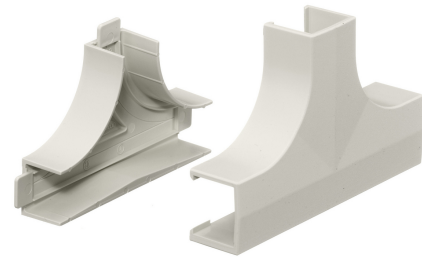
Environmental - Flame Rating - UL94V-0, Environmental -  
Temperature Range - -25.6° to 158° F

### Specifications

Industry Standard(s)	<ul style="list-style-type: none"><li>• CSA Standard C22.2 no. 62</li><li>• E118895 / E119190</li><li>• UL Standard UL 5A</li></ul>
EU RoHS Indicator	Contact Manufacturer

### General

Item Type	PP1 PremiseTrak (Latching) Series
-----------	--------------------------------------



Type	Tees
Series	PP1
Material	Non-Metallic
Specifications	<ul style="list-style-type: none"><li>• Crush Resistance - 300 lbs.</li><li>• Impact Resistance - 5 ft. lbs.</li><li>• Material - UV Stabilized PVC</li></ul>
UPC	783585090580
Style	Base and Cover
Color	Office White

### Logistics

Carton Quantity	10
-----------------	----

### Product Assets

- [Catalog \[English\]](#)
- [Catalog \[English\]](#)
- [Catalog Page \[English\]](#)