

HUBBELL Premise Wiring

Non-Metallic Raceway, Latching PremiseTrak, Baseand Cover, Internal Elbow

By Hubbell Premise Wiring
Catalog # [PP1IEBC](#)

Non-Metallic Raceway Latching PremiseTrak, Baseand Cover,
Internal Elbow

Features

- Full capacity 1¼ in. bend radius internal elbow

Performance

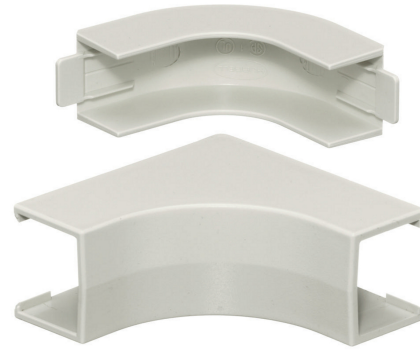
Environmental - Flame Rating - UL94V-0, Environmental -
Temperature Range - -25.6° to 158° F

Specifications

Industry Standard(s)	<ul style="list-style-type: none">• CSA Standard C22.2 no. 62• E118895 / E119190• UL Standard UL 5A
EU RoHS Indicator	Contact Manufacturer

General

Item Type	PP1 PremiseTrak (Latching) Series
-----------	--------------------------------------



Type	Elbows
Series	PP1
Material	Non-Metallic
Specifications	<ul style="list-style-type: none">• Crush Resistance - 300 lbs.• Impact Resistance - 5 ft. lbs.• Material - UV Stabilized PVC
UPC	783585090511
Style	Internal
Color	Office White

Logistics

Carton Quantity	25
-----------------	----

Product Assets

- [Catalog \[English\]](#)
- [Catalog \[English\]](#)
- [Catalog Page \[English\]](#)