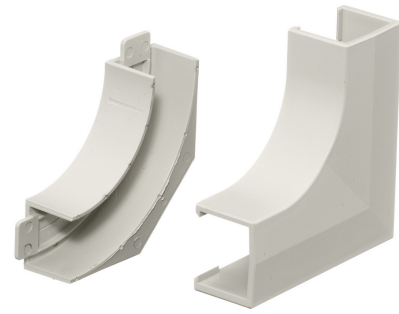


HUBBELL Premise Wiring

Non-Metallic Raceway, Latching PremiseTrak, Base and Cover, Flat Elbow

By Hubbell Premise Wiring
Catalog # [PP1FEBC](#)

Non-Metallic Raceway Latching PremiseTrak, Base and Cover,
Flat Elbow



Features

- Full capacity 1¼ in. bend radius flat elbow

Performance

Environmental - Flame Rating - UL94V-0, Environmental -
Temperature Range - -25.6° to 158° F

Specifications

Industry Standard(s)	<ul style="list-style-type: none">• CSA Standard C22.2 no. 62• E118895 / E119190• UL Standard UL 5A
EU RoHS Indicator	Contact Manufacturer

General

Item Type	PP1 PremiseTrak (Latching)
Type	Series Elbows

Series

Material
Specifications

PP1

Non-Metallic

- Crush Resistance - 300 lbs.
- Impact Resistance - 5 ft. lbs.
- Material - UV Stabilized PVC

UPC

Style
Color

783585090504

Flat

Office White

Logistics

Carton Quantity	25
Pallet Quantity	3850

Product Assets

- [Catalog \[English\]](#)
- [Catalog \[English\]](#)
- [Catalog Page \[English\]](#)