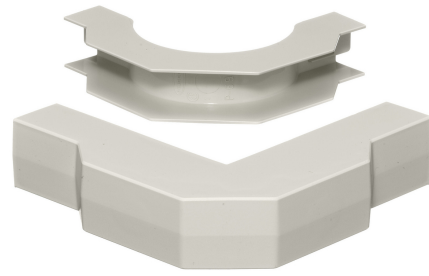


# HUBBELL Premise Wiring

## Non-Metallic Raceway, Latching PremiseTrak, Base and Cover, External Elbow

By Hubbell Premise Wiring  
Catalog # [PPIEEBC](#)

Non-Metallic Raceway Latching PremiseTrak, Base and Cover,  
External Elbow



### Features

- Full capacity 1¼ in. bend radius external elbow

### Performance

Environmental - Flame Rating - UL94V-0, Environmental -  
Temperature Range - -25.6° to 158° F

### Specifications

Industry Standard(s)	<ul style="list-style-type: none"><li>• CSA Standard C22.2 no. 62</li><li>• E118895 / E119190</li><li>• UL Standard UL 5A</li></ul>
EU RoHS Indicator	Contact Manufacturer

### General

Item Type	PP1 PremiseTrak (Latching) Series
-----------	--------------------------------------

### Type

Series

Material

Specifications

UPC

Style

Color

### Elbows

PP1

Non-Metallic

- Crush Resistance - 300 lbs.
- Impact Resistance - 5 ft. lbs.
- Material - UV Stabilized PVC

783585090498

External

Office White

### Logistics

Carton Quantity	25
-----------------	----

### Product Assets

[Catalog \[English\]](#)

[Catalog \[English\]](#)

[Catalog Page \[English\]](#)