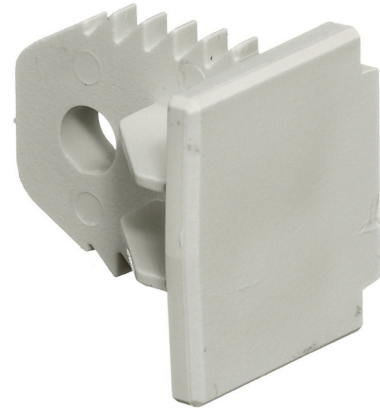


# HUBBELL Premise Wiring

## Non-Metallic Raceway, Latching PremiseTrak, End Cap

By Hubbell Premise Wiring  
Catalog # [PP1EC](#)

Non-Metallic Raceway Latching PremiseTrak, End Cap



### Features

- For closing end of raceway

### Performance

Environmental - Flame Rating - UL94V-0, Environmental -  
Temperature Range - -25.6° to 158° F

### Specifications

Industry Standard(s)	<ul style="list-style-type: none"><li>• CSA Standard C22.2 no. 62</li><li>• E118895 / E119190</li><li>• UL Standard UL 5A</li></ul>
EU RoHS Indicator	Contact Manufacturer

### General

Item Type	PP1 PremiseTrak (Latching)
Type	Series Miscellaneous Fittings

### Series

Material  
Specifications

UPC  
Style  
Color

### Logistics

Carton Quantity	25
Pallet Quantity	12250

### Product Assets

[Catalog \[English\]](#)  
[Catalog \[English\]](#)  
[Catalog Page \[English\]](#)

### PP1

Non-Metallic

- Crush Resistance - 300 lbs.
- Impact Resistance - 5 ft. lbs.
- Material - UV Stabilized PVC

783585090481

End Cap  
Office White