

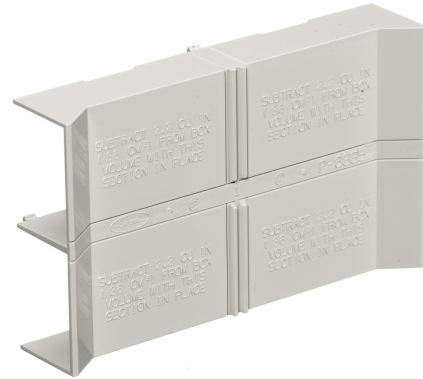
HUBBELL

Premise Wiring

Non-Metallic Raceway, PolyTrak Series, PolyTrak Box, 2-Gang, Deep

By Hubbell Premise Wiring
Catalog # [PDB2DIV](#)

Non-Metallic Raceway PolyTrak, PolyTrak Box, Double, Deep



Features

- Reduces inventory requirements
- Eliminates need to order three separate boxes
- Boxes available in low, standard and deep profiles

Performance

Environmental - Flame Rating - UL94V-0, Environmental -
Temperature Range - -25.6° to 158° F

Specifications

Industry Standard(s)	<ul style="list-style-type: none">• CSA Standard C22.2 no. 62• E118895 / E119190• UL Standard UL 5A
EU RoHS Indicator	Contact Manufacturer
Standards - RoHS Compliance	CM
Status	

Configuration

Number of Gang(s)	2-Gang
-------------------	--------

General

Item Type	PW2 WallTrak (Latching) Series
Type	Boxes
Series	PW2
Specifications	<ul style="list-style-type: none">• Crush Resistance - 300 lbs.• Impact Resistance - 5 ft. lbs.• Material - UV Stabilized PVC
UPC	783585091303
Style	Divider/Pass Thru
Color	Office White

Logistics

Carton Quantity	10
-----------------	----

Product Assets

- [Catalog \[English\]](#)
- [Catalog \[English\]](#)
- [Catalog Page \[English\]](#)