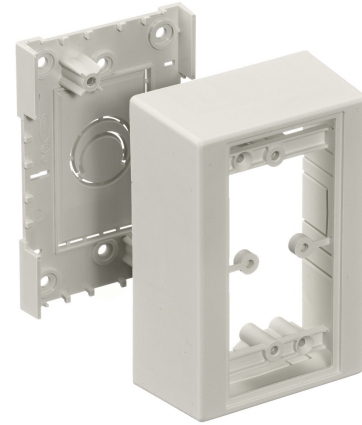


# HUBBELL Premise Wiring

## Non-Metallic Raceway, PolyTrak Series, PolyTrak Box, 1-Gang, 1.78" Depth Standard

By Hubbell Premise Wiring  
Catalog # [PDB12S](#)

Non-Metallic Raceway, PolyTrak Series, PolyTrak Box, 1-Gang,  
1.78" Depth Standard



### Features

- Reduces inventory requirements
- Eliminates need to order three separate boxes
- Boxes available in low, standard and deep profiles

### Performance

Environmental - Flame Rating - UL94V-0, Environmental -  
Temperature Range - -25.6° to 158° F

### Specifications

Industry Standard(s)	<ul style="list-style-type: none"><li>• CSA Standard C22.2 no. 62</li><li>• E118895 / E119190</li><li>• UL Standard UL 5A</li></ul>
EU RoHS Indicator	Contact Manufacturer

### Configuration

Number of Gang(s)	1-Gang
-------------------	--------

### General

Item Type	PW2 WallTrak, PL1 LANTrak and PP1 PremiseTrak (Latching) Series
-----------	---

Type  
Series

Specifications

UPC  
Style  
Color

### Logistics

Carton Quantity	5
Pallet Quantity	1040

### Product Assets

- [Catalog \[English\]](#)
- [Catalog \[English\]](#)
- [Catalog Page \[English\]](#)
- [Catalog Page \[English\]](#)
- [Catalog Page \[English\]](#)
- [Catalog Page \[English\]](#)

Boxes

- PP1
  - PL1
  - PW2
  - Crush Resistance - 300 lbs.
  - Impact Resistance - 5 ft. lbs.
  - Material - UV Stabilized PVC
  - Style - 1-Gang
- 783585090405  
Standard  
Office White