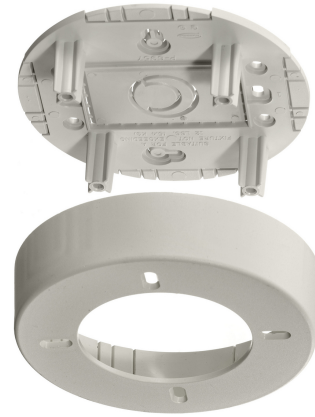


# HUBBELL Premise Wiring

## Non-Metallic Raceway, PolyTrak Series, PolyTrak Box, Round

By Hubbell Premise Wiring  
Catalog # [PDB12LF](#)

Non-Metallic Raceway, PolyTrak Series, PolyTrak Box, Round



### Features

- Reduces inventory requirements
- Eliminates need to order three separate boxes
- Boxes available in low, standard and deep profiles

### Performance

Environmental - Flame Rating - UL94V-0, Environmental -  
Temperature Range - -25.6° to 158° F

### Specifications

Industry Standard(s)	<ul style="list-style-type: none"><li>• CSA Standard C22.2 no. 62</li><li>• E118895 / E119190</li><li>• UL Standard UL 5A</li></ul>
EU RoHS Indicator	Contact Manufacturer

### General

Item Type	PW2 WallTrak, PL1 LANTrak and PP1 PremiseTrak (Latching)
Type	Series Boxes

### Series

- PP1
- PL1
- PW2

### Specifications

- Crush Resistance - 300 lbs.
- Impact Resistance - 5 ft. lbs.
- Material - UV Stabilized PVC

### UPC

783585090382

### Style

Round

### Color

Office White

### Logistics

Carton Quantity	5
-----------------	---

### Product Assets

- [Catalog \[English\]](#)
- [Catalog \[English\]](#)
- [Catalog Page \[English\]](#)
- [Catalog Page \[English\]](#)
- [Catalog Page \[English\]](#)
- [Catalog Page \[English\]](#)