

**Raceway**  
**Non-Metallic Raceway**  
**PB3 BaseTrak<sup>®</sup> Internal Elbow Base and Cover**

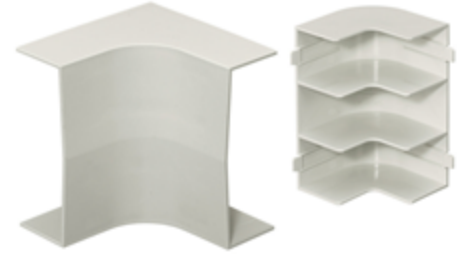
# HUBBELL

**Features**

- Full capacity 1¼ in. bend radius internal elbow.

**Ordering Information**

Description	Color	UPC Number	Catalog Number
Internal Elbow Base and Cover	Office White	783585310107	PB3IEBCA

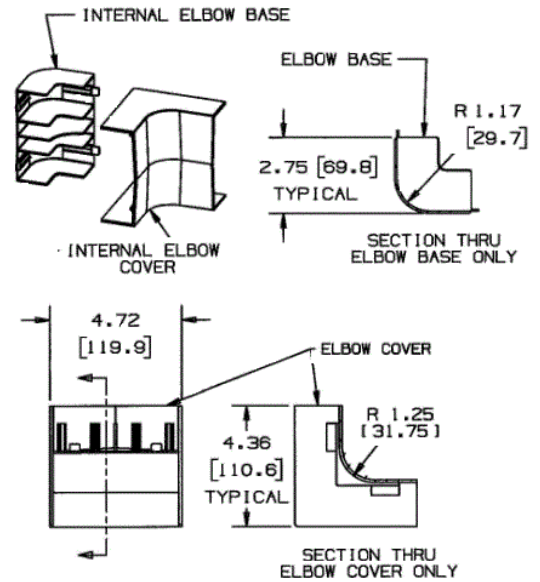


**Listings**

UL Listed  
 CSA Certified

**Specifications**

Height	4.72"
Width	4.36"
Length	4.36"



**Online Resources**

Customer Use Drawing  
 eCatalog  
 Installation Instructions