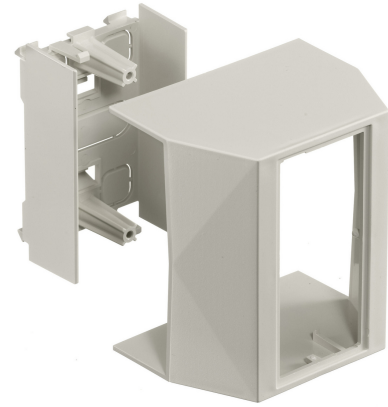


HUBBELL Premise Wiring

Non-Metallic Raceway, BaseTrak Series, 1-Gang, Full Capacity Raised Box

By Hubbell Premise Wiring
Catalog # [PB3FCIB](#)

Non-Metallic Raceway, BaseTrak Series, 1- Gang, Full Capacity Raised Box



Features

- Reduces inventory requirements
- Eliminates need to order three separate boxes
- Boxes available in low, standard and deep profiles

Performance

Environmental - Flame Rating - UL94V-0, Environmental - Temperature Range - -25.6° to 158° F

Specifications

Industry Standard(s)	<ul style="list-style-type: none">• CSA Standard C22.2 no. 62• E118895 / E119190• UL Standard UL 5A
EU RoHS Indicator	Contact Manufacturer
Standards - RoHS Compliance	CM
Status	

Configuration

Number of Gang(s)	1-Gang
-------------------	--------

General

Item Type	PB3 BaseTrak Series
Type	Boxes
Series	PB3
Specifications	<ul style="list-style-type: none">• Crush Resistance - 300 lbs.• Impact Resistance - 5 ft. lbs.• Material - UV Stabilized PVC
UPC	783585090948
Style	Full Capacity
Color	Office White

Logistics

Carton Quantity	10
-----------------	----

Product Assets

- [Catalog \[English\]](#)
- [Catalog \[English\]](#)
- [Catalog Page \[English\]](#)