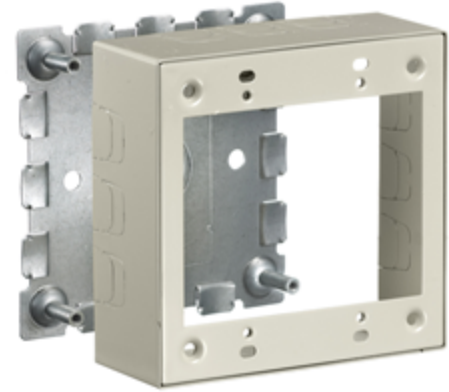


**Raceway  
Metal Raceway  
2-Gang Standard Box**

# HUBBELL

## Features

- For use with HBL500, HBL700 and HBL750 Series Raceway
- Hubbell Handi-Screw® eases installation by eliminating difficult to install long screws
- Rounded corners with no sharp edges
- One seam construction provides a “clean” look
- Box design allows standard wallplates to be mounted flush with virtually no perimeter profile exposed



## Ordering Information

Description	Color	UPC Number	Catalog Number
2-Gang Standard Box	Ivory	783585423531	HBL57482IVA

## Listings

UL Listed  
CSA Certified

## Specifications

Height	4.54"
Width	4.64"
Length	1.75"

## Online Resources

eCatalog