



Straight Blade Devices, Accessories, 1 and 2 Gang Adapter Plate, Quad-Plex Receptacles, Blue, Single Pack

By Bryant
Catalog # ADAPBLU

Straight Blade Devices, Accessories, 1 and 2 Gang Adapter Plate, Quad-Plex Receptacles, Blue, Single Pack

Features

- 1 and 2 Gang Adapter Plate
- Quad-Plex Receptacles
- Blue
- Single Pack

Application

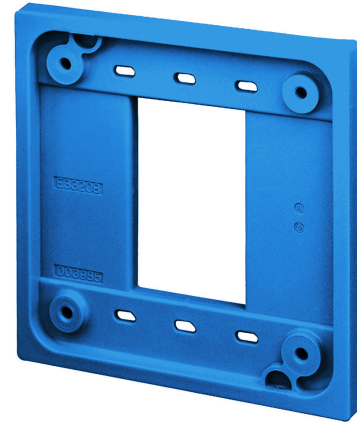
Commercial/Industrial

Specifications

Environmental Conditions	Indoor Dry Unless Protected By Additional Means
EU RoHS Indicator	Yes

Dimensions

Display Size	Standard Sized Product
Width	3.38 in
Weight	0.05 lb.
Height	2.75 in
Length	4.78 in



Dimensions 4.78 in x 3.38 in x 2.75 in

General

Material - Mounting Hardware	Screw Mounting
Type	Four Outlet Receptacle
Series	Hospital Grade
OEM Brand Name	Hubbell Bryant
Material	Polycarbonate
UPC	781786336957
Style	Adapter Plates
Color	Blue

Logistics

Carton Quantity 10

Product Assets

- [Catalog \[English\]](#)
- [Catalog Page \[English\]](#)
- [Catalog Page \[English\]](#)
- [Catalog Page \[English\]](#)
- [Catalog Page \[English\]](#)