

Hub City™ DuraLine™ Bearing Units

Load Ratings



BEARING RADIAL LOAD CAPACITY (POUNDS) FOR 500 HOURS L-10 LIFE (2500 HOURS AVERAGE LIFE) AND STEADY LOAD CONDITIONS											
SHAFT SIZE (INCHES)		BASIC DYNAMIC RATING, C* (POUNDS)	BASIC STATIC RATING, Co** (POUNDS)	BEARING SPEED (RPM)							
100, 200 SERIES	300 SERIES			100	500	1,000	1,500	2,000	2,500	3,000	3,500
1/2 to 5/8		2150	1070	1,490	870	690	600	550	510	480	460
3/4		2880	1490	2,000	1,170	930	810	740	680	640	610
7/8 to 1		3150	1770	2,180	1,280	1010	890	800	750	700	670
1-1/8 to 1-1/4S	1	4380	2520	3,040	1,780	1410	1230	1120	1040	980	930
1-1/4 to 1-7/16		5780	3420	4,010	2,340	1860	1620	1480	1370	1290	
1-1/2	1-7/16	6650	4090	4,610	2,700	2140	1870	1700	1580	1480	
1-5/8 to 1-3/4	1-1/2	7160	4680	4,960	2,900	2300	2010	1830	1700		
1-7/8 to 2S	1-5/8 to 1-3/4	7890	5220	5,470	3,200	2540	2220	2020	1870		
2 to 2-3/16	1-15/16 to 2	9790	6560	6,790	3,970	3150	2750	2500			
2-1/4 to 2-7/16	2-3/16	10750	7370	7,450	4,360	3460	3020	2750			
	2-7/16 to 2-1/2	13670	10120	9,480	5,540	4400	3840				
2-15/16	2-11/16	14840	11130	10,290	6,020	4780	4170				
	2-15/16 to 3	16070	12180	11,140	6,520	5170	4520				
	3-7/16 to 3-1/2	21560	16070	14,950	8,740	6940	6060				

TO MODIFY THE ABOVE RATINGS FOR OTHER L-10 LIFE REQUIREMENTS OR FOR SHOCK LOADS MULTIPLY THE ABOVE RATINGS BY THE FACTOR FROM THIS CHART														
MODIFICATION FACTORS FOR L-10 SERVICE LIFE AND LOAD CONDITIONS:														
LOAD CONDITIONS	L-10 LIFE (HOURS)													
	500	700	1,000	1,500	2,000	3,000	4,000	5,000	7,000	10,000	15,000	20,000	30,000	50,000
Steady Load	1.00	.894	.794	.694	.630	.550	.500	.464	.415	.368	.322	.292	.255	.215
Light Shock	.90	.804	.715	.624	.567	.495	.450	.418	.373	.331	.290	.263	.230	.194
Moderate Shock	.70	.626	.556	.485	.441	.385	.350	.325	.290	.258	.225	.205	.179	.151

* Radial load for an L-10 rating life of 1,000,000 revolutions.
 ** Radial load rating for stationary or very low speed operation.

Maximum Recommended Speeds:

100, 200 Series	300 Series	
1/2 to 1-1/4S	1	3,500 RPM
1-1/4 to 1-1/2	1-3/16 to 1-7/16	3,000 RPM
1-5/8 to 2S	1-1/2 to 1-3/4	2,500 RPM
2 to 2-7/16	1-15/16 to 2-1/4	2,000 RPM
	2-7/16 to 2-11/16	1,700 RPM
	2-15/16 to 3-1/2	1,500 RPM

For ultimate life, snug fit or light press fit on shaft should be used.
 Recommended operating temperature range: -25 to +225 deg F.
 For applications not covered in the rating tables, consult the factory.
 Ratings are based on ISO 281.
 Ratings are based on snug or light press fit on shaft. Multiply ratings by 0.8 for loose shaft fits.

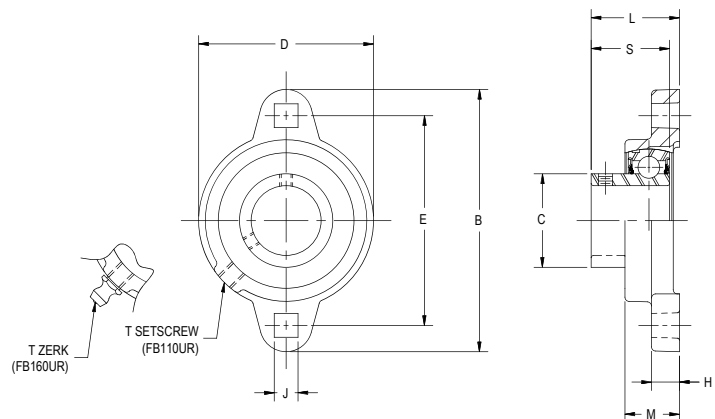
FOR LUBRICATION AND MOUNTING INSTRUCTIONS REFER TO SECTION M.

Hub City™ DuraLine™ Bearing Units

Flange Blocks

Series FB110UR, FB130UR, FB160UR

100 SERIES 2 BOLT FLANGE BLOCK SETSCREW LOCK



Features

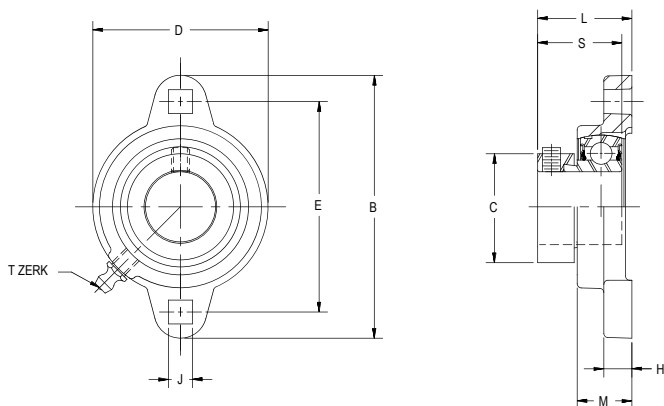
- Self-aligning replaceable bearing
- Pre-lubricated with lithium grease
- Steel retainers
- Anti-rotation pins
- Nitrile rubber seals with steel trash guards
- Precision bored housings



100 SERIES – 2 BOLT FLANGE BLOCKS – DUCTILE IRON – SETSCREW LOCK

FB110UR (NON-RELUBE) & FB160UR (RELUBE)

SHAFT SIZE	B	C	D	E	H	J	L	M	S	WT. LBS.
1/2, 5/8	3.190	0.921	2.200	2.500	0.380	0.280	1.000	0.710	0.866	0.6
3/4	3.540	1.142	2.400	2.815	0.430	0.340	1.140	0.790	0.984	0.8
7/8, 1	3.740	1.339	2.520	2.992	0.430	0.340	1.200	0.790	1.063	0.8
1-1/8, 1-3/16, 1-1/4s	4.450	1.587	2.990	3.560	0.470	0.410	1.340	0.890	1.181	1.1
1-1/4, 1-3/8, 1-7/16	4.800	1.889	3.500	3.937	0.510	0.410	1.440	0.940	1.260	1.5



100 SERIES – 2 BOLT FLANGE BLOCKS – DUCTILE IRON – ECCENTRIC LOCK

FB130UR

SHAFT SIZE	B	C	D	E	H	J	L	M	S	WT. LBS.
1/2, 5/8	3.190	1.102	2.200	2.500	0.380	0.280	1.260	0.710	1.126	0.6
3/4	3.540	1.299	2.400	2.815	0.430	0.340	1.380	0.790	1.220	0.8
7/8, 1	3.740	1.476	2.520	2.992	0.430	0.340	1.360	0.790	1.220	0.8
1-1/8, 1-3/16, 1-1/4s	4.450	1.732	2.990	3.560	0.470	0.410	1.560	0.890	1.405	1.1
1-1/4, 1-3/8, 1-7/16	4.800	2.165	3.500	3.937	0.510	0.410	1.710	0.940	1.531	1.5

For Load Ratings, See Page J-3

T-Zerk: 1/4-28 Taper
T-Setscrew: 1/4-28

DuraLine Replacement Inserts

For 100 Series Setscrew Lock Use B250R, for 100 Series Eccentric Lock Use B220R

Dimensions shown are for reference only.

To order, specify type and bore size. Example: FB260UR x 1-7/16

FOR LUBRICATION AND MOUNTING INSTRUCTIONS
REFER TO SECTION M.

DOWNLOAD AVAILABLE CAD MODELS AT: WWW.HUBCITYINC.COM

Certified prints are available upon request

CALL: (605) 225-0360 • FAX: (605) 225-0567